

Datasheet for ABIN1742349

anti-SYNPO antibody (Isoform 2)[Go to Product page](#)

3 Images

2 Publications

Overview

Quantity:	100 µL
Target:	SYNPO
Binding Specificity:	AA 331-452, Isoform 2
Reactivity:	Mouse, Rat
Host:	Guinea Pig
Clonality:	Polyclonal
Application:	Immunohistochemistry (IHC), Immunocytochemistry (ICC)

Product Details

Immunogen:	Recombinant mouse synaptopodin (aa 331-452 in isoform 2).
Specificity:	Fragment used for immunization is present in all 3 isoforms.
Purification:	antiserum

Target Details

Target:	SYNPO
Alternative Name:	Synaptopodin (SYNPO Products)

Application Details

Application Notes:	WB: 1 : 500 (AP staining) IP: not tested yet ICC: 1 : 500
--------------------	---

Application Details

IHC: 1 : 200

IHC-P: 1 : 200

Comment: WB: Application is limited, the antibody is less sensitive than the rabbit antibody.

Restrictions: For Research Use only

Handling

Format: Liquid

Buffer: PBS

Handling Advice: Crude antisera are more robust than monoclonals. With anti-microbials added, they may be stored at 4 °C.

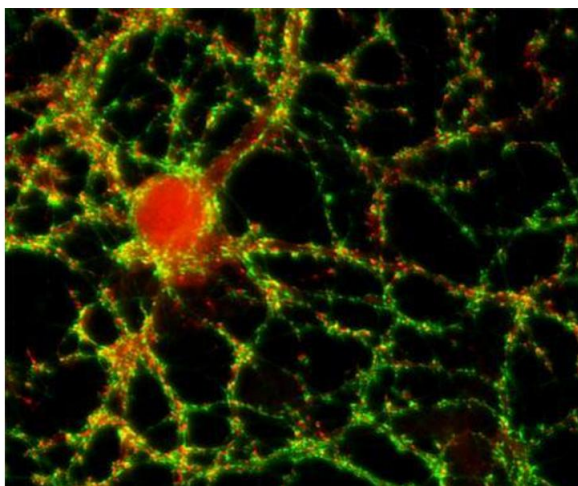
Serum does not contain active proteases, in fact, serum itself contains a powerful cocktail of protease inhibitors. Frozen storage (-20 °C), however, is preferable.

Storage: 4 °C/-20 °C

Storage Comment: Unlabeled antibodies are stable in this form without loss of quality at ambient temperatures for several weeks or even months. They can be stored at 4 °C for several years.

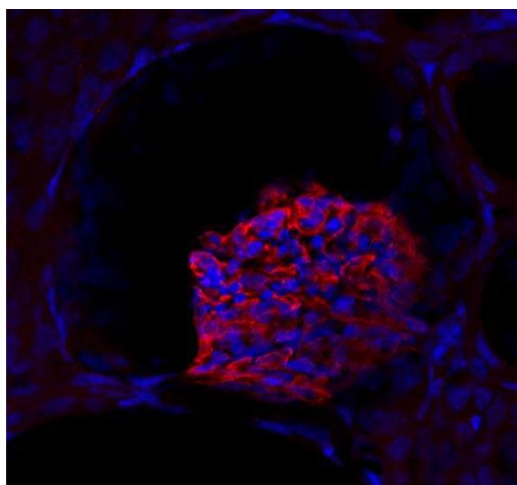
Publications

Product cited in: Wiedemann, Giehl, Almo, Fedorov, Girvin, Steinberger, Rüdiger, Ortner, Sippl, Dolecek, Kraft, Jockusch, Valenta: "Molecular and structural analysis of a continuous birch profilin epitope defined by a monoclonal antibody." in: **The Journal of biological chemistry**, Vol. 271, Issue 47, pp. 29915-21, (1997) ([PubMed](#)).



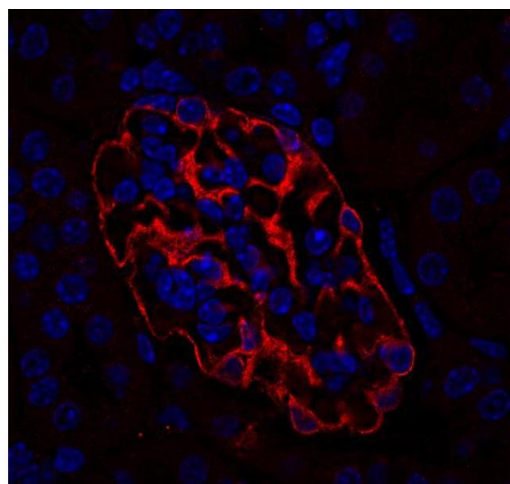
Immunocytochemistry

Image 1. Indirect immunofluorescence labeling of cultured hippocampal neurons with anti-synaptopodin (dilution 1 : 500; red) and anti-synapsin (cat. no. 106 001; dilution 1 : 500; green).



Immunohistochemistry

Image 2. Immunostaining of a glomerulus in a mouse kidney section (dilution 1 : 200). Immunoreactivity was revealed using a Cy3 conjugated secondary antibody. Nuclei were visualized by DAPI staining (blue).



Immunohistochemistry (Paraffin-embedded Sections)

Image 3. Immunostaining of a paraffin embedded mouse kidney section (dilution 1 : 200; red). Nuclei were visualized by DAPI staining (blue).