

Datasheet for ABIN1742351
anti-VTI1A antibody (AA 2-185)

3 Images

3 Publications

[Go to Product page](#)

Overview

Quantity:	200 µL
Target:	VTI1A
Binding Specificity:	AA 2-185
Reactivity:	Mouse, Rat
Host:	Rabbit
Clonality:	Polyclonal
Application:	Western Blotting (WB), Immunoprecipitation (IP), Immunocytochemistry (ICC)

Product Details

Immunogen:	Recombinant mouse vti1a (aa 2-185).
Specificity:	Specific for vti1a.
Purification:	antiserum

Target Details

Target:	VTI1A
Alternative Name:	Vti1a (VTI1A Products)

Application Details

Application Notes:	WB: 1 : 1000 (AP staining) ICC: 1 : 500 IHC: not tested yet
--------------------	---

Application Details

Restrictions: For Research Use only

Handling

Format: Liquid

Buffer: PBS

Handling Advice: Crude antisera are more robust than monoclonals. With anti-microbials added, they may be stored at 4 °C.

Serum does not contain active proteases, in fact, serum itself contains a powerful cocktail of protease inhibitors. Frozen storage (-20 °C), however, is preferable.

Storage: 4 °C/-20 °C

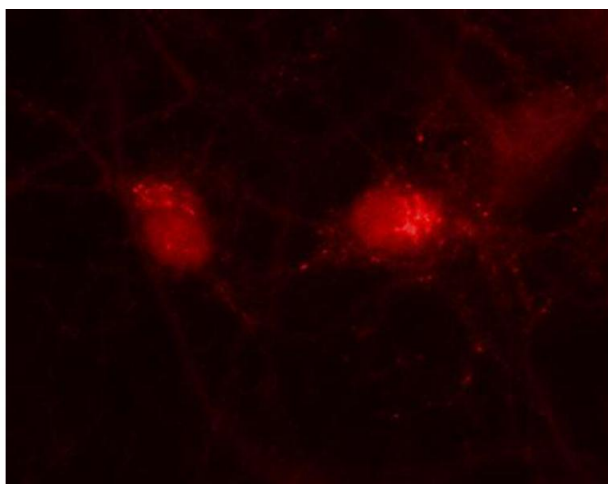
Storage Comment: Unlabeled antibodies are stable in this form without loss of quality at ambient temperatures for several weeks or even months. They can be stored at 4 °C for several years.

Publications

Product cited in: Bozdagi, Sakurai, Dorr, Pilorge, Takahashi, Buxbaum: "Haploinsufficiency of Cyfip1 produces fragile X-like phenotypes in mice." in: **PLoS ONE**, Vol. 7, Issue 8, pp. e42422, (2012) ([PubMed](#)).

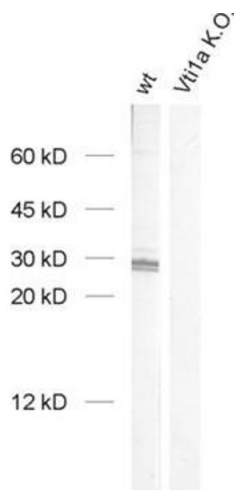
Steffen, Faix, Resch, Linkner, Wehland, Small, Rottner, Stradal: "Filopodia formation in the absence of functional WAVE- and Arp2/3-complexes." in: **Molecular biology of the cell**, Vol. 17, Issue 6, pp. 2581-91, (2006) ([PubMed](#)).

Images



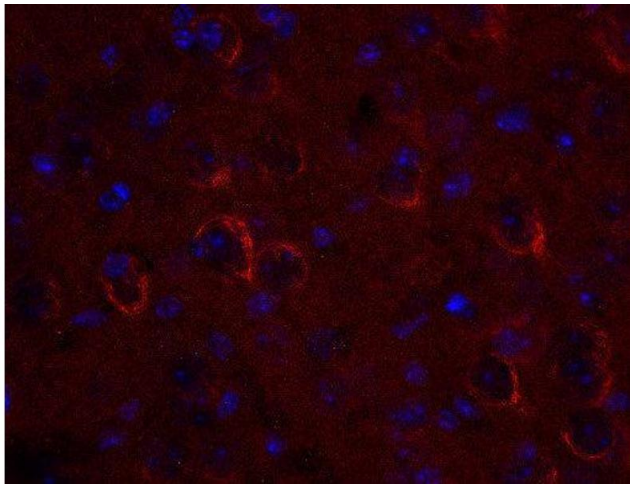
Immunocytochemistry

Image 1. Immunofluorescence labeling of rat hippocampal neurons (dilution 1 : 500).



Western Blotting

Image 2. dilution: 1 : 1000, sample: brain homogenate from wildtype and Vti1a K.O. mice



Immunohistochemistry

Image 3. Indirect immunostaining of PFA fixed mouse brain section (dilution 1 : 500; red). Nuclei have been visualized by DAPI staining (blue).