

Datasheet for ABIN1742422
anti-KDEL1 antibody (AA 192-212)

3 Images

[Go to Product page](#)

Overview

Quantity:	50 µg
Target:	KDEL1
Binding Specificity:	AA 192-212
Reactivity:	Human, Cow, Mouse, Rat, Dog, Monkey
Host:	Rabbit
Clonality:	Polyclonal
Application:	Western Blotting (WB), Immunoprecipitation (IP), Immunocytochemistry (ICC), Immunohistochemistry (IHC)

Product Details

Immunogen:	Synthetic peptide (aa 192-212 in rat Erd 2) coupled to key-hole limpet hemocyanin via an added N-terminal cysteine residue.
Specificity:	Recognizes Erd 1 and Erd 2.
Purification:	Affinity purified with the immunogen. Rabbit serum albumin was added for stabilization.

Target Details

Target:	KDEL1
Alternative Name:	Erd 2 (KDEL1 Products)
Pathways:	Maintenance of Protein Location

Application Details

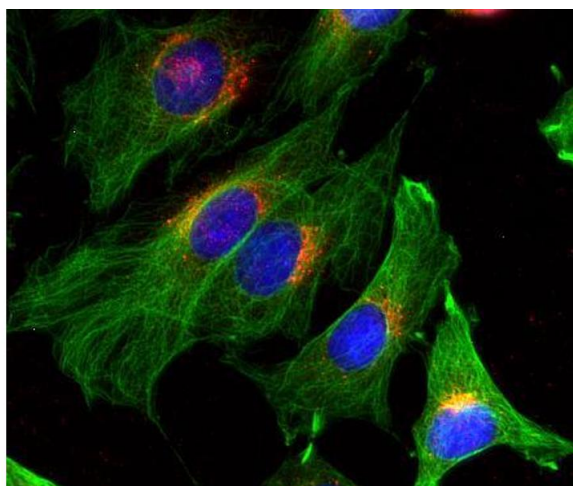
Application Notes:	WB: 1 : 1000 (AP staining)
	ICC: 1 : 100
	IHC: 1 : 200

Restrictions:	For Research Use only
---------------	-----------------------

Handling

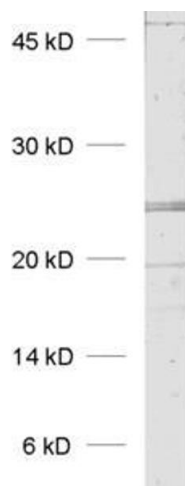
Format:	Lyophilized
Reconstitution:	For reconstitution add 50 µL H ₂ O to get a 1mg/ml solution of antibody in PBS. Then aliquot and store at -20 °C until use.
Buffer:	PBS
Handling Advice:	Affinity purified antibodies are less robust than antisera, since protease inhibitors are also removed during purification. Hence, storage at 4 °C for prolonged periods (i.e. several weeks), is not recommended.
Storage:	-20 °C
Storage Comment:	Unlabeled lyophilized antibodies are stable in this form without loss of quality at ambient temperatures for several weeks or even months. They can be stored at 4°C for several years. Lyophilized antibodies must not be stored in the freezer, they may be destroyed!

Images



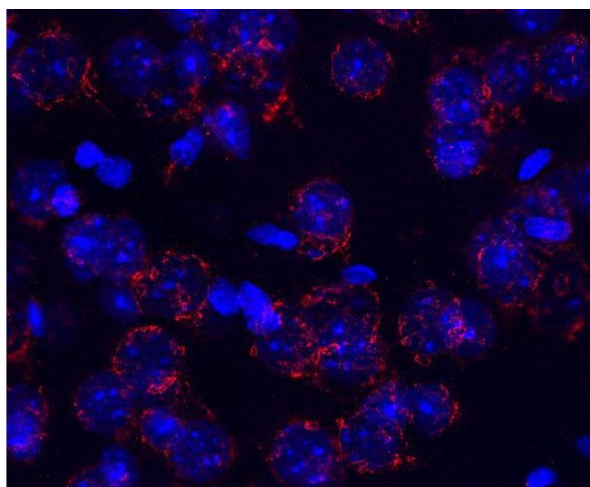
Immunocytochemistry

Image 1. Indirect immunofluorescence on 3T3 cells (dilution 1 : 100; red) in combination with the monoclonal antibody against α-tubulin (cat. no. 302 201, dilution 1 : 500; green). Nuclei are visualized by DAPI staining (blue).



Western Blotting

Image 2. dilution: 1 : 1000, sample: rat placenta homogenate



Immunohistochemistry

Image 3. Indirect immunostaining of a PFA fixed mouse brain section (dilution 1 : 200; red). Nuclei have been visualized by DAPI staining (blue).