

Datasheet for ABIN1742426
anti-Calretinin antibody



[Go to Product page](#)

3 Images

Overview

Quantity:	200 µL
Target:	Calretinin (CALB2)
Reactivity:	Mouse, Rat, Zebrafish (Danio rerio), Chicken
Host:	Rabbit
Clonality:	Polyclonal
Application:	Western Blotting (WB), Immunohistochemistry (IHC), Immunoprecipitation (IP)

Product Details

Immunogen:	Recombinant full length mouse calretinin.
Specificity:	Specific for calretinin.
Purification:	antiserum

Target Details

Target:	Calretinin (CALB2)
Alternative Name:	Calretinin (CALB2 Products)
Background:	Synonyms: CALB2, CAB29, Calbindin D29k

Application Details

Application Notes:	WB: 1 : 1000 up to 1 : 5000 (AP staining) ICC: not tested yet IHC: 1 : 500
--------------------	--

Application Details

Restrictions: For Research Use only

Handling

Format: Liquid

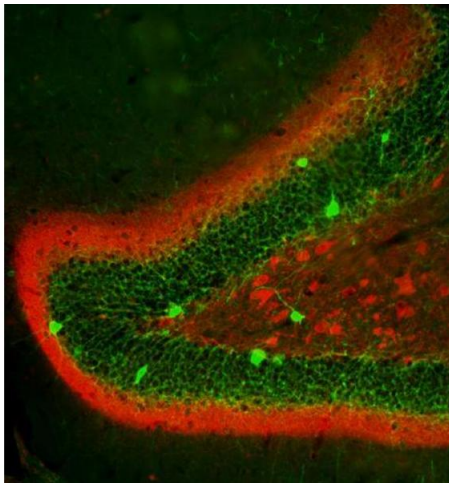
Buffer: PBS

Handling Advice: Crude antisera are more robust than monoclonals. With anti-microbials added, they may be stored at 4 °C.
Serum does not contain active proteases, in fact, serum itself contains a powerful cocktail of protease inhibitors. Frozen storage (-20 °C), however, is preferable.

Storage: 4 °C/-20 °C

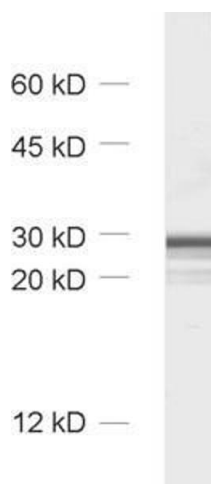
Storage Comment: Unlabeled antibodies are stable in this form without loss of quality at ambient temperatures for several weeks or even months. They can be stored at 4 °C for several years.

Images



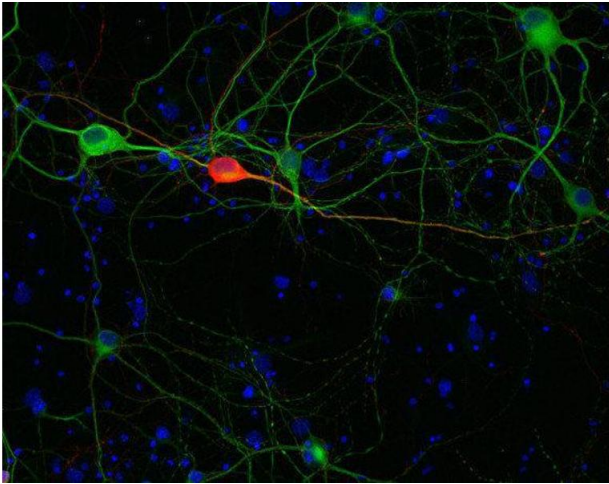
Immunohistochemistry

Image 1. Indirect immunolabeling of the dentate gyrus (PFA fixed) in mouse with anti-calretinin (red, dilution 1 : 500) and anti-parvalbumin (cat. no. 195 004, green, dilution 1 : 500). Immunoreactive structures have been revealed with fluorochromated secondary antibodies.



Western Blotting

Image 2. dilution: 1 : 1000, sample: synaptosomal fraction (P2) of rat brain



Immunocytochemistry

Image 3. Indirect immunostaining of methanol fixed rat hippocampus neurons with anti-calretinin (dilution 1 : 500; red) and mouse anti-MAP 2 (cat. no. 188 011, dilution 1 : 1000; green). Nuclei have been visualized by DAPI staining (blue).