



[Go to Product page](#)

Datasheet for ABIN1742443

anti-Abeta 1-40 antibody (AA 33-40)

4 Images

1 Publication

Overview

Quantity:	50 µg
Target:	Abeta 1-40
Binding Specificity:	AA 33-40
Reactivity:	Human, Rat, Mouse
Host:	Rabbit
Clonality:	Polyclonal
Application:	Immunohistochemistry (IHC), Western Blotting (WB), ELISA

Product Details

Immunogen:	Synthetic peptide corresponding to aa 33-40 of Abeta 40 coupled to key-hole limpet hemocyanin via an added N-terminal cysteine residue.
Specificity:	Specific for Abeta 40
Cross-Reactivity (Details):	no cross reactivity to Abeta 38 and 42.
Purification:	Affinity purified with the immunogen. Rabbit serum albumin was added for stabilization.

Target Details

Target:	Abeta 1-40
Alternative Name:	Abeta 40 (Abeta 1-40 Products)
Background:	Synonyms: Beta-App, ABPP

Application Details

Application Notes: WB: 1 : 1000
 IP: not tested yet
 ICC: not tested yet
 IHC: 1 : 200 up to 1 : 500
 IHC-P: 1 : 100 up to 1 : 500

Comment: WB: Detects purified Abeta 40. Complex samples like brain extracts still have to be tested.
 ELISA: suitable as capture and detector antibody for sandwich-ELISA (protocol for sandwich-ELISA).

Restrictions: For Research Use only

Handling

Format: Lyophilized

Reconstitution: For reconstitution add 50 µL H₂O to get a 1mg/ml solution of antibody in PBS. Then aliquot and store at -20 °C until use.

Buffer: PBS

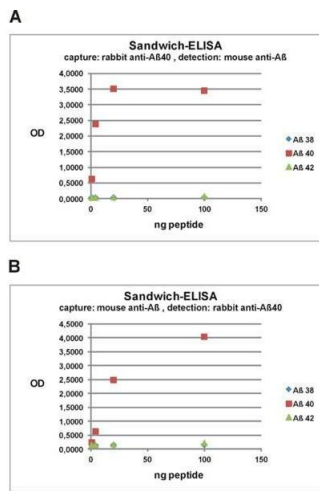
Handling Advice: Affinity purified antibodies are less robust than antisera, since protease inhibitors are also removed during purification. Hence, storage at 4 °C for prolonged periods (i.e. several weeks), is not recommended.

Storage: -20 °C

Storage Comment: Unlabeled lyophilized antibodies are stable in this form without loss of quality at ambient temperatures for several weeks or even months. They can be stored at 4°C for several years. Lyophilized antibodies must not be stored in the freezer, they may be destroyed!

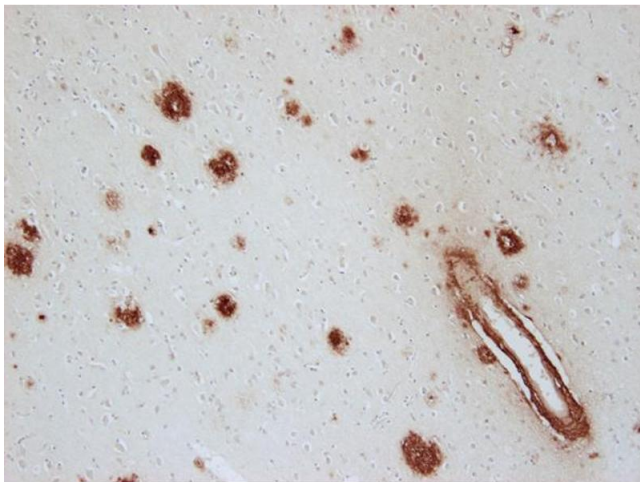
Publications

Product cited in: Atkinson, Floerchinger, Qiao, Casey, Williamson, Moseley, Stoica, Goddard, Ge, Tullius, Tomlinson: "Donor brain death exacerbates complement-dependent ischemia/reperfusion injury in transplanted hearts." in: **Circulation**, Vol. 127, Issue 12, pp. 1290-9, (2013) ([PubMed](#)).



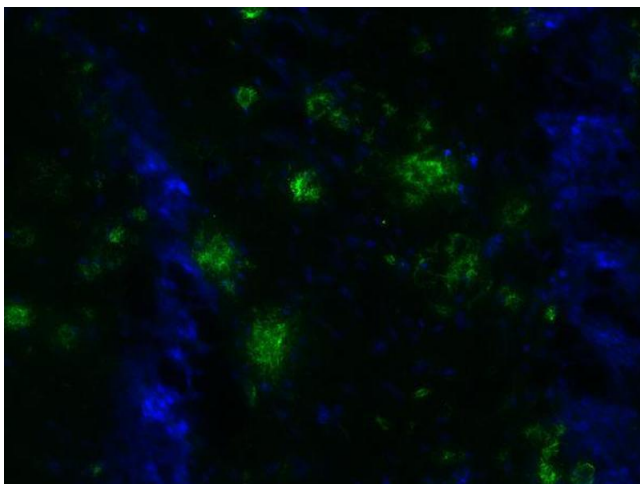
ELISA

Image 1.



Immunohistochemistry (Paraffin-embedded Sections)

Image 2. Immunostaining of paraffin embedded brain section from an Alzheimer's patient (dilution 1 : 100). Immunoreactivity in amyloid plaques was revealed using diaminobenzidine as chromagen. Nuclei were counterstained with haematoxylin (blue).



Immunohistochemistry

Image 3. Indirect immunostaining of a PFA fixed brain section from a 5XFAD mouse (dilution 1 : 500; green). Immunoreactivity in amyloid plaques was revealed using fluorochromated secondary antibodies. Nuclei have been visualized by DAPI staining.

Please check the [product details page](#) for more images. Overall 4 images are available for ABIN1742443.