

Datasheet for ABIN1742485  
**anti-GPM6A antibody (AA 261-270)**[Go to Product page](#)

## 4 Images

## Overview

Quantity:	50 µg
Target:	GPM6A
Binding Specificity:	AA 261-270
Reactivity:	Human, Mouse, Rat, Dog, Zebrafish (Danio rerio), Pig
Host:	Rabbit
Clonality:	Polyclonal
Conjugate:	This GPM6A antibody is un-conjugated
Application:	Western Blotting (WB), Immunohistochemistry (IHC), Immunocytochemistry (ICC)

## Product Details

Immunogen:	Synthetic peptide (aa 261-270 in rodent M6a glycoprotein) coupled to KLH via an N-terminal added cysteine.
Specificity:	Specific for M6a neuronal glycoprotein.
Purification:	Affinity purified with the immunogen. Rabbit serum albumin was added for stabilization.

## Target Details

Target:	GPM6A
Alternative Name:	M6a Glycoprotein ( <a href="#">GPM6A Products</a> )
Background:	Synonyms: GPM6a

## Application Details

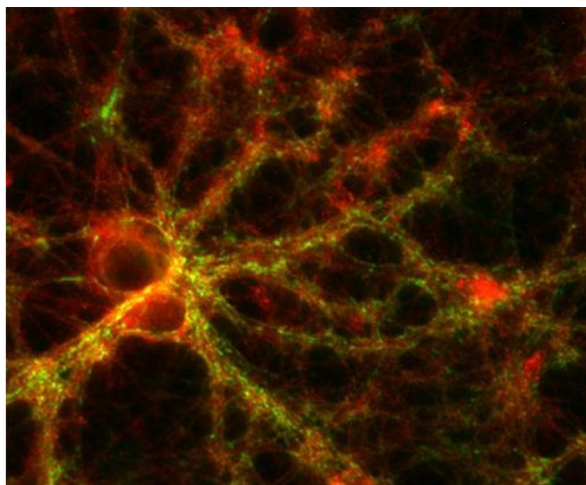
Application Notes:	WB: 1 : 1000 (AP staining)
	IP: not tested yet
	ICC: 1 : 1000
	IHC: 1 : 200

Restrictions:	For Research Use only
---------------	-----------------------

## Handling

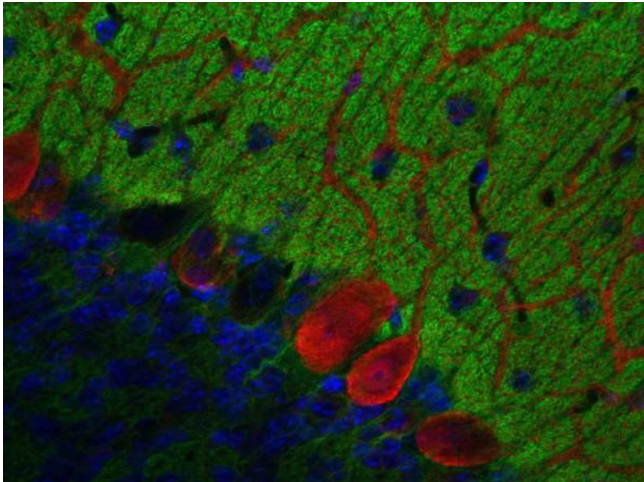
Format:	Lyophilized
Reconstitution:	For reconstitution add 50 µL H <sub>2</sub> O to get a 1mg/ml solution of antibody in PBS. Then aliquot and store at -20 °C until use.
Buffer:	PBS
Handling Advice:	Affinity purified antibodies are less robust than antisera, since protease inhibitors are also removed during purification. Hence, storage at 4 °C for prolonged periods (i.e. several weeks), is not recommended.
Storage:	-20 °C
Storage Comment:	Unlabeled lyophilized antibodies are stable in this form without loss of quality at ambient temperatures for several weeks or even months. They can be stored at 4°C for several years. Lyophilized antibodies must not be stored in the freezer, they may be destroyed!

## Images



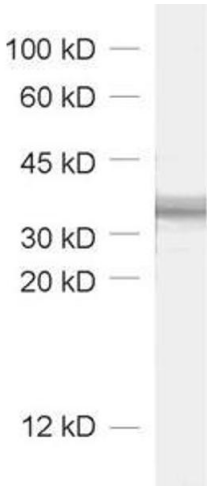
### Immunocytochemistry

Image 1.



**Immunohistochemistry**

**Image 2.**



**Western Blotting**

**Image 3.**

Please check the [product details page](#) for more images. Overall 4 images are available for ABIN1742485.