

Datasheet for ABIN1742533
anti-SLC6A5 antibody (AA 1-229)

3 Images

1 Publication

[Go to Product page](#)

Overview

Quantity:	50 µg
Target:	SLC6A5
Binding Specificity:	AA 1-229
Reactivity:	Rat, Mouse
Host:	Rabbit
Clonality:	Polyclonal
Application:	Western Blotting (WB), Immunohistochemistry (IHC), Immunoprecipitation (IP)

Product Details

Immunogen:	Recombinant protein (aa 1-229 of rat GLYT2)
Specificity:	Specific for glycine transporter 2.
Purification:	Affinity purified with the immunogen. Rabbit serum albumin was added for stabilization.

Target Details

Target:	SLC6A5
Alternative Name:	Glycine Transporter 2 (SLC6A5 Products)
Background:	Synonyms: GLYT 2, Slc6a5

Application Details

Application Notes:	WB: 1 : 1000 (AP staining)
--------------------	----------------------------

Application Details

ICC: not tested yet

IHC: 1 : 200

Comment: WB: Aggregates after boiling, making it necessary to run SDS-PAGE with non-boiled samples.

Restrictions: For Research Use only

Handling

Format: Lyophilized

Reconstitution: For reconstitution add 50 µL H₂O to get a 1mg/ml solution of antibody in PBS. Then aliquot and store at -20 °C until use.

Buffer: PBS

Handling Advice: Affinity purified antibodies are less robust than antisera, since protease inhibitors are also removed during purification. Hence, storage at 4 °C for prolonged periods (i.e. several weeks), is not recommended.

Storage: -20 °C

Storage Comment: Unlabeled lyophilized antibodies are stable in this form without loss of quality at ambient temperatures for several weeks or even months. They can be stored at 4°C for several years. Lyophilized antibodies must not be stored in the freezer, they may be destroyed!

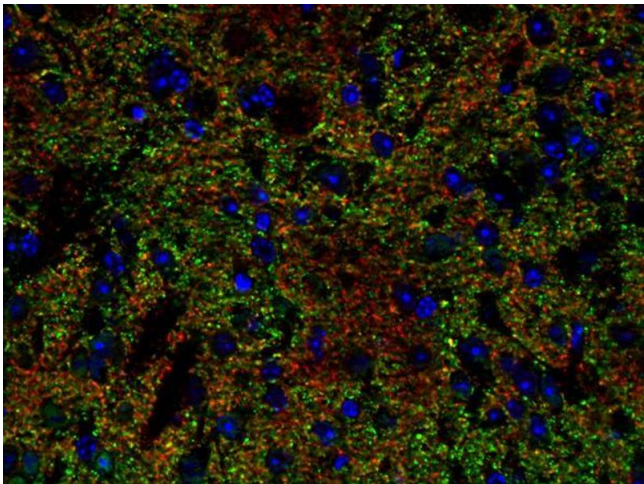
Publications

Product cited in: McLinden, Kaufman, Xiang, Chang, Klinzman, Engel, Hess, Schmidt, Houghton, Stapleton: "Characterization of an immunodominant antigenic site on GB virus C glycoprotein E2 that is involved in cell binding." in: **Journal of virology**, Vol. 80, Issue 24, pp. 12131-40, (2006) ([PubMed](#)).



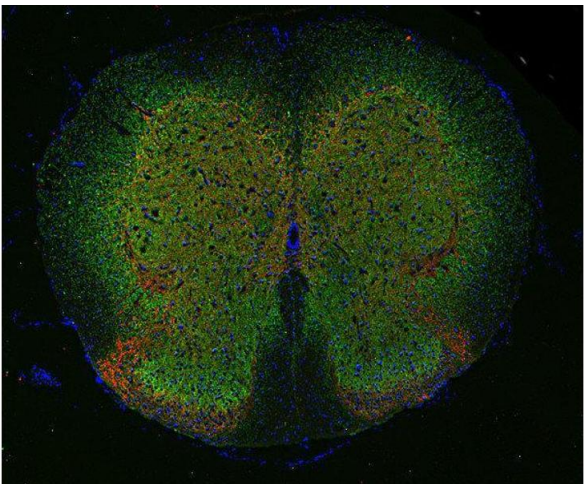
Western Blotting

Image 1.



Immunohistochemistry

Image 2.



Immunohistochemistry (Paraffin-embedded Sections)

Image 3. Indirect immunofluorescence labeling of PFA fixed, paraffin embedded mouse spinal cord with anti-GlyT 2 (dilution 1 : 500; green) and guinea pig anti-VGluT 2 (cat. no. 135 404, dilution 1 : 500; red). Nuclei have been visualized by DAPI staining (blue).