

Datasheet for ABIN1742537  
**anti-SLC6A11 antibody (AA 612-627)**[Go to Product page](#)

## 4 Images

## Overview

Quantity:	50 µg
Target:	SLC6A11
Binding Specificity:	AA 612-627
Reactivity:	Rat, Mouse
Host:	Rabbit
Clonality:	Polyclonal
Application:	Western Blotting (WB), Immunohistochemistry (IHC)

## Product Details

Immunogen:	Synthetic peptide (aa 612-627 of mouse GAT 3) coupled to key-hole limpet hemocyanin via an added N-terminal cysteine.
Specificity:	Specific for GAT 3.
Purification:	Affinity purified with the immunogen. Rabbit serum albumin was added for stabilization.

## Target Details

Target:	SLC6A11
Alternative Name:	GABA Transporter 3 ( <a href="#">SLC6A11 Products</a> )
Background:	Synonyms: GAT 3, Gabt3, Slc6a11

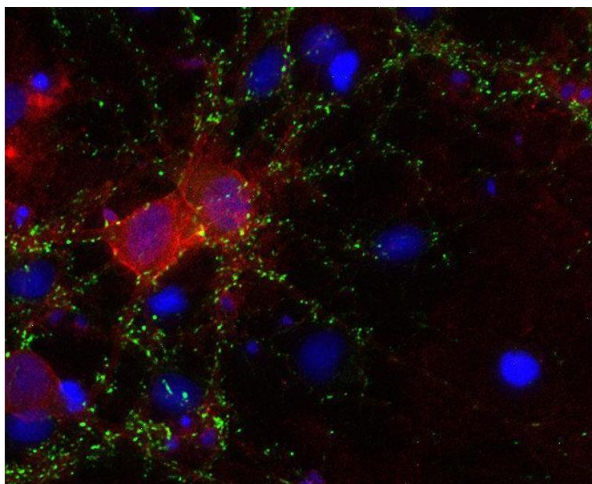
## Application Details

Application Notes:	WB: 1 : 1000 (AP staining) IP: not tested yet ICC: not tested yet IHC: 1 : 500 up to 1 : 1000
Comment:	WB: GAT 3 aggregates after boiling, making it necessary to run SDS-PAGE with non-boiled samples.
Restrictions:	For Research Use only

## Handling

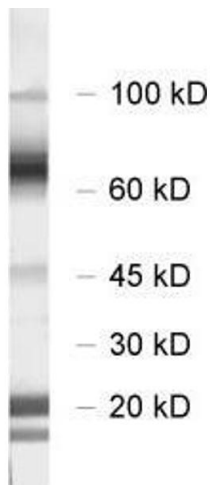
Format:	Lyophilized
Reconstitution:	For reconstitution add 50 µL H <sub>2</sub> O to get a 1mg/ml solution of antibody in PBS. Then aliquot and store at -20 °C until use.
Buffer:	PBS
Handling Advice:	Affinity purified antibodies are less robust than antisera, since protease inhibitors are also removed during purification. Hence, storage at 4 °C for prolonged periods (i.e. several weeks), is not recommended.
Storage:	-20 °C
Storage Comment:	Unlabeled lyophilized antibodies are stable in this form without loss of quality at ambient temperatures for several weeks or even months. They can be stored at 4°C for several years. Lyophilized antibodies must not be stored in the freezer, they may be destroyed!

## Images



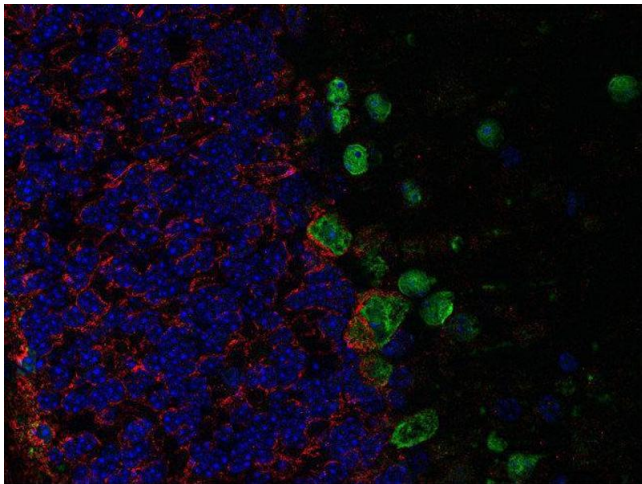
### Immunocytochemistry

**Image 1.** Indirect immunostaining of PFA fixed rat hippocampus neurons with anti-GAT 3 (dilution 1 : 500; red) and mouse anti-synapsin 1 (cat. no. 106 001, dilution 1 : 1000; green). Nuclei have been visualized by DAPI staining (blue).



#### Western Blotting

**Image 2.**



#### Immunohistochemistry (Paraffin-embedded Sections)

**Image 3.** Indirect immunolabeling of PFA fixed, paraffin embedded mouse cerebellum with rabbit anti-GAT 3 (dilution 1 : 500; red) and chicken anti-parvalbumin (cat. no. 195 006, dilution 1 : 500; green). Nuclei have been visualized by DAPI staining (blue).

Please check the [product details page](#) for more images. Overall 4 images are available for ABIN1742537.