

Datasheet for ABIN1742552

anti-alpha Tubulin antibody (AA 443-449)[Go to Product page](#)**3** Images**1** Publication

Overview

| | |
|----------------------|--|
| Quantity: | 100 µg |
| Target: | alpha Tubulin (TUBA1) |
| Binding Specificity: | AA 443-449 |
| Reactivity: | Chicken, Mammalian |
| Host: | Rat |
| Clonality: | Monoclonal |
| Application: | Western Blotting (WB), Immunohistochemistry (IHC), Immunocytochemistry (ICC) |

Product Details

| | |
|---------------|--|
| Immunogen: | Synthetic peptide EGEEEGE (aa 443-449 of rat alpha-tubulin) coupled to key-hole limpet hemocyanin via an added N -terminal cysteine residue. |
| Clone: | 37B5 |
| Isotype: | IgG1 |
| Specificity: | Specific for alpha-tubulin. |
| Purification: | purified IgG. Azide was added before lyophilization. |

Target Details

| | |
|-------------------|--|
| Target: | alpha Tubulin (TUBA1) |
| Alternative Name: | alpha-Tubulin (TUBA1 Products) |
| Pathways: | Microtubule Dynamics |

Application Details

| | |
|--------------------|---|
| Application Notes: | WB: 1 : 1000 up to 1 : 5000 (AP staining) IP: not tested yet ICC: 1 : 200 up to 1 : 500 IHC: 1 : 400 |
|--------------------|---|

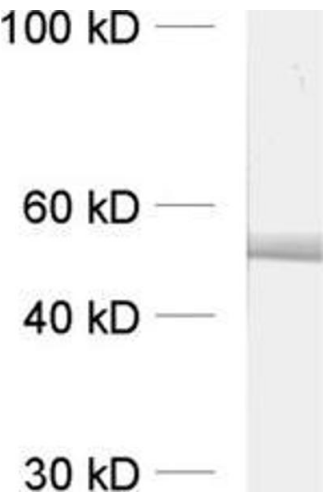
| | |
|---------------|-----------------------|
| Restrictions: | For Research Use only |
|---------------|-----------------------|

Handling

| | |
|--------------------|---|
| Format: | Lyophilized |
| Reconstitution: | For reconstitution add 100 µL H ₂ O to get a 1mg/ml solution of antibody in PBS. Then aliquot and store at -20 °C until use. |
| Buffer: | PBS, 0.02% sodium azide |
| Preservative: | Sodium azide |
| Precaution of Use: | This product contains Sodium azide: a POISONOUS AND HAZARDOUS SUBSTANCE which should be handled by trained staff only. |
| Handling Advice: | Do not store diluted antibody solutions unless you add detergent or carrier proteins such as goat serum, BSA or others. IgG sticks to glass and plastic. Any IgG solution below 0.1 mg/mL protein will quickly adsorb and denature and thus loose activity! Repetitive freeze-thawing of dilute purified IgG is almost certain to lead to substantial losses. |
| Storage: | -20 °C |
| Storage Comment: | Unlabeled antibodies are stable in this form without loss of quality at ambient temperatures for several weeks or even months. They can be stored at 4 °C for several years. |

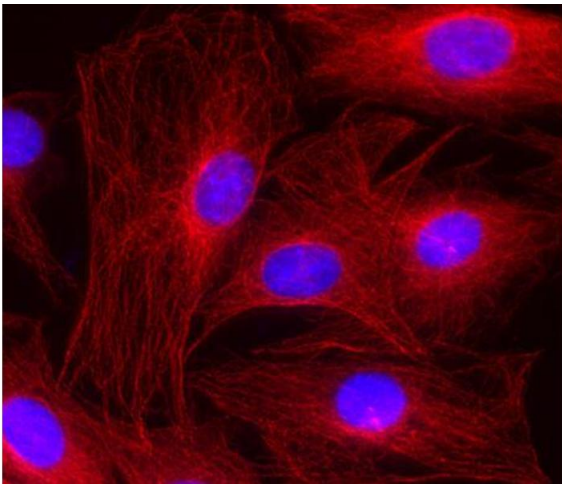
Publications

| | |
|-------------------|---|
| Product cited in: | Luchkina, Huupponen, Clarke, Coleman, Keinänen, Taira, Lauri: "Developmental switch in the kinase dependency of long-term potentiation depends on expression of GluA4 subunit-containing AMPA receptors." in: Proceedings of the National Academy of Sciences of the United States of America , Vol. 111, Issue 11, pp. 4321-6, (2014) (PubMed). |
|-------------------|---|



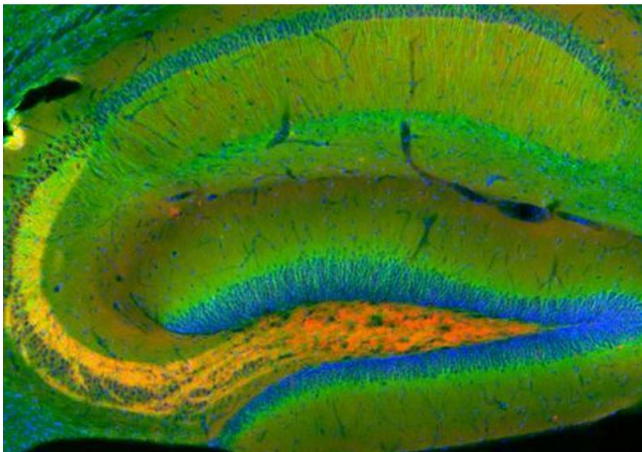
Western Blotting

Image 1.



Immunocytochemistry

Image 2.



Immunohistochemistry

Image 3.