

Datasheet for ABIN1774789

anti-MICA antibody

3 Images

9 Publications

[Go to Product page](#)

Overview

Quantity:	0.1 mg
Target:	MICA
Reactivity:	Human, Cow, Cat, Non-Human Primate
Host:	Mouse
Clonality:	Monoclonal
Conjugate:	This MICA antibody is un-conjugated
Application:	ELISA, Flow Cytometry (FACS), Immunoprecipitation (IP), Immunocytochemistry (ICC), Immunohistochemistry (Frozen Sections) (IHC (fro)), Functional Studies (Func), Cytometry by Time of Flight (CyTOF)

Product Details

Immunogen:	Membrane of human tonsil cells
Clone:	W6-32
Isotype:	IgG2a
Specificity:	The antibody W6/32 recognises an extracellular epitope of MHC Class I molecules (MHC Class Ia) that are expressed on the surface of all human nucleated cell types. The antibody W6/32 is a valuable reagent for analysing variations in HLA class I expression in different disease states e.g. liver disease, muscular dystrophy, inflammatory myopathy and other neuromuscular disorders. This antibody W6/32 is also suitable as a positive control for HLA tissue typing and crossmatching.
No Cross-Reactivity:	Rabbit

Product Details

Cross-Reactivity (Details):	Human, Non-Human Primates, Bovine, Feline (Cat)
Purification:	Purified by protein-A affinity chromatography.
Purity:	> 95 % (by SDS-PAGE)
Endotoxin Level:	Endotoxin level is less than 0.01 EU/µg of the protein, as determined by the LAL test.

Target Details

Target:	MICA
Alternative Name:	HLA-Class I (MICA Products)
Background:	HLA-class I major histocompatibility (MHC) antigens are intrinsic membrane glycoproteins expressed on nucleated cells and noncovalently associated with an invariant beta2 microglobulin. They carry foreign determinants important for immune recognition by cytotoxic T cells, thus important for anti-viral and anti-tumour defence. Human HLA-class I antigens are represented by HLA-A, HLA-B and HLA-C molecules.
Pathways:	Activation of Innate immune Response , Transition Metal Ion Homeostasis

Application Details

Application Notes:	Functional application: The antibody W6/32 is suitable as a positive control for HLA tissue typing. Flow cytometry: Recommended dilution: 1-4 µg/mL
Restrictions:	For Research Use only

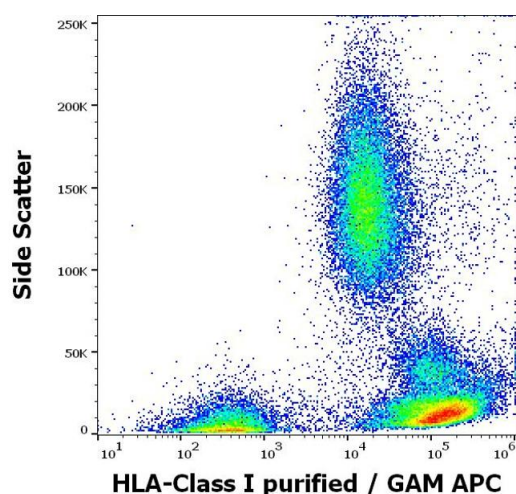
Handling

Concentration:	1 mg/mL
Buffer:	Phosphate buffered saline (PBS), pH 7.4
Preservative:	Azide free
Handling Advice:	Do not freeze.
Storage:	4 °C
Storage Comment:	Store at 2-8°C. Do not freeze.

Publications

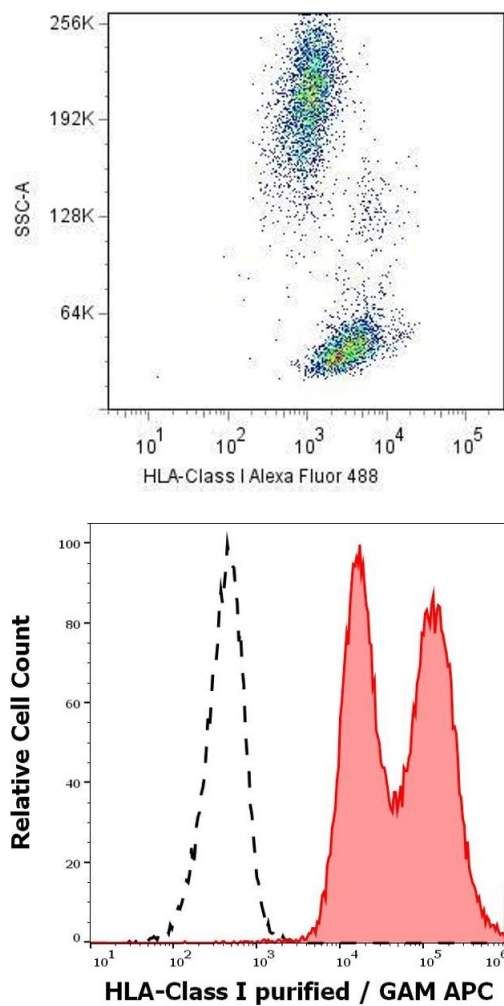
- Product cited in: Le Discorde, Moreau, Sabatier, Legeais, Carosella: "Expression of HLA-G in human cornea, an immune-privileged tissue." in: **Human immunology**, Vol. 64, Issue 11, pp. 1039-44, (2003) ([PubMed](#)).
- Tran, Ivanyi, Hilgert, Brdicka, Pla, Breur, Flieger, Ivasková, Horejsí: "The epitope recognized by pan-HLA class I-reactive monoclonal antibody W6/32 and its relationship to unusual stability of the HLA-B27/beta2-microglobulin complex." in: **Immunogenetics**, Vol. 53, Issue 6, pp. 440-6, (2001) ([PubMed](#)).
- Ladasky, Shum, Canavez, Seuáñez, Parham: "Residue 3 of beta2-microglobulin affects binding of class I MHC molecules by the W6/32 antibody." in: **Immunogenetics**, Vol. 49, Issue 4, pp. 312-20, (1999) ([PubMed](#)).
- Shields, Ribaud: "Mapping of the monoclonal antibody W6/32: sensitivity to the amino terminus of beta2-microglobulin." in: **Tissue antigens**, Vol. 51, Issue 5, pp. 567-70, (1998) ([PubMed](#)).
- Jacobsen, Aasted, Broe, Petersen: "Reactivities of 20 anti-human monoclonal antibodies with leucocytes from ten different animal species." in: **Veterinary immunology and immunopathology**, Vol. 39, Issue 4, pp. 461-6, (1994) ([PubMed](#)).
- There are more publications referencing this product on: [Product page](#)

Images



Flow Cytometry

Image 1. Flow cytometry surface staining pattern of human peripheral whole blood stained using anti-HLA Class I (W6/32) purified antibody (concentration in sample 4 µg/mL, GAM APC).



Flow Cytometry

Image 2. Surface staining of human peripheral blood cells with anti-HLA-class I(W6/32) Alexa Fluor® 488.

Flow Cytometry

Image 3. Separation of leukocytes stained using anti-HLA Class I (W6/32) purified antibody (concentration in sample 4 µg/mL, GAM APC, red-filled) from leukocytes unstained by primary antibody (GAM APC, black-dashed) in flow cytometry analysis (surface staining).