



[Go to Product page](#)

Datasheet for ABIN1774859  
**anti-WIP1 antibody (AA 348-445)**

1 Image

### Overview

Quantity:	200 µL
Target:	WIP1
Binding Specificity:	AA 348-445
Reactivity:	Human
Host:	Mouse
Clonality:	Monoclonal
Conjugate:	This WIP1 antibody is un-conjugated
Application:	Western Blotting (WB), ELISA

### Product Details

Purpose:	Mouse monoclonal antibody raised against a partial recombinant WIP1.
Immunogen:	WIP1 (NP_060453.2, 348 a.a. ~ 445 a.a) partial recombinant protein with GST tag. MW of the GST tag alone is 26 KDa.
Sequence:	GGECVLIKTH SLLGSGTTEE NKENDLRPSL PQSYAATVAR PSASSASTVP GYSEDGGALR GEVIPEHEFA TGPVCLDDEN EFPPIILCRG NQKGKTKQ
Clone:	2D1
Isotype:	IgG2a kappa
Cross-Reactivity:	Human

## Target Details

Target:	WIPI1
Alternative Name:	WIPI1 ( <a href="#">WIPI1 Products</a> )
Background:	Full Gene Name: WD repeat domain, phosphoinositide interacting 1 Synonyms: ATG18,FLJ10055,WIPI49
Gene ID:	55062
NCBI Accession:	<a href="#">NP_060453</a> , <a href="#">NM_017983</a>
Pathways:	<a href="#">Nuclear Hormone Receptor Binding</a> , <a href="#">ER-Nucleus Signaling</a>

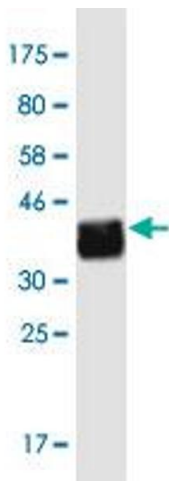
## Application Details

Application Notes:	Optimal working dilution should be determined by the investigator.
Comment:	Product Quality tested by: Antibody Reactive Against Recombinant Protein.
Restrictions:	For Research Use only

## Handling

Format:	Liquid
Buffer:	In ascites fluid
Handling Advice:	Aliquot to avoid repeated freezing and thawing.
Storage:	-20 °C
Storage Comment:	Store at -20°C or lower. Aliquot to avoid repeated freezing and thawing.

## Images



### Western Blotting

**Image 1.** Western Blot detection against Immunogen (36.52 KDa) .