



[Go to Product page](#)

Datasheet for ABIN1774884  
**anti-SLC15A3 antibody (AA 254-311)**

3 Images

### Overview

Quantity:	100 µg
Target:	SLC15A3
Binding Specificity:	AA 254-311
Reactivity:	Human
Host:	Mouse
Clonality:	Monoclonal
Conjugate:	This SLC15A3 antibody is un-conjugated
Application:	ELISA, Western Blotting (WB)

### Product Details

Purpose:	Mouse monoclonal antibody raised against a partial recombinant SLC15A3.
Immunogen:	SLC15A3 (NP_057666.1, 254 a.a. ~ 311 a.a) partial recombinant protein with GST tag. MW of the GST tag alone is 26 KDa.
Sequence:	KPPMGSQVSS MLKLALQNCC PQLWQRHSAR DRQCARVLAD ERSQPFGASP QEDIANFQ
Clone:	5B4
Isotype:	IgG2b
Cross-Reactivity:	Human, Rat
Characteristics:	Antibody Reactive Against Recombinant Protein.

## Target Details

Target:	SLC15A3
Alternative Name:	SLC15A3 ( <a href="#">SLC15A3 Products</a> )
Background:	Full Gene Name: solute carrier family 15, member 3 Synonyms: FLJ26631,OCTP,PHT2,PTR3,hPTR3
Gene ID:	51296
NCBI Accession:	<a href="#">NM_016582</a>

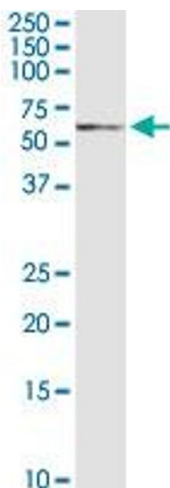
## Application Details

Application Notes:	Optimal working dilution should be determined by the investigator.
Restrictions:	For Research Use only

## Handling

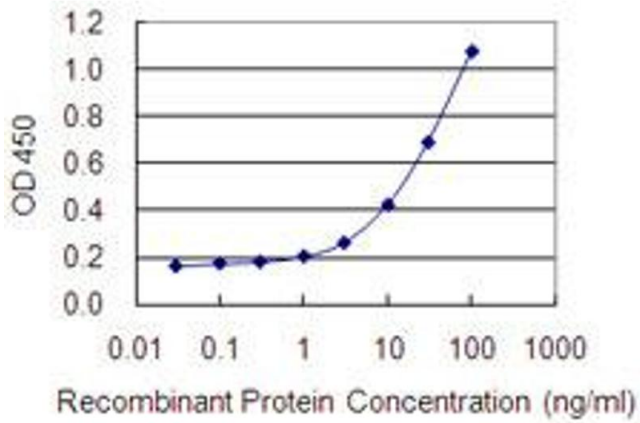
Buffer:	In 1x PBS, pH 7.4
Handling Advice:	Aliquot to avoid repeated freezing and thawing.
Storage:	-20 °C
Storage Comment:	Store at -20°C or lower. Aliquot to avoid repeated freezing and thawing.

## Images



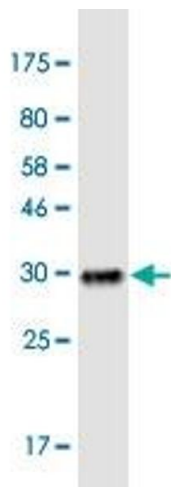
### Western Blotting

**Image 1.** SLC15A3 monoclonal antibody (M04), clone 5B4.  
Western Blot analysis of SLC15A3 expression in PC-12.



### ELISA

**Image 2.** Detection limit for recombinant GST tagged SLC15A3 is 0.3 ng/ml as a capture antibody.



### Western Blotting

**Image 3.** Western Blot detection against Immunogen (32.12 KDa).