



Datasheet for ABIN1774887
anti-IMPA2 antibody (AA 1-288)



[Go to Product page](#)

1 Image

Overview

Quantity:	100 µg
Target:	IMPA2
Binding Specificity:	AA 1-288
Reactivity:	Human
Host:	Rabbit
Clonality:	Polyclonal
Conjugate:	This IMPA2 antibody is un-conjugated
Application:	Western Blotting (WB)

Product Details

Purpose:	Rabbit polyclonal antibody raised against a full-length human IMPA2 protein.
Immunogen:	IMPA2 (NP_055029.1, 1 a.a. ~ 288 a.a) full-length human protein.
Sequence:	MKPSGEDQAA LAAGPWEECF QAAVQLALRA GQIIRKALTE EKRVTSTSA ADLVTETDHL VEDLIISELR ERFPSHRFIA EEAASGAKC VLTHSPTWII DPIDGTCNFV HRFPTVAVSI GFAVRQELEF GVIYHCTEER LYTGRRGRGA FCNGQRLRVS GETDLSKALV LTEIGPKRDP ATLKLFLSNM ERLHAKAHG VRVIGSSTLA LCHLASGAAD AYYQFGLHCW DLAAATVIIR EAGGIVIDTS GGPLDLMACR VVAASTREMA MLIAQALQTI NYGRDDEK
Cross-Reactivity:	Human
Characteristics:	Antibody reactive against mammalian transfected lysate.

Target Details

Target:	IMPA2
Alternative Name:	IMPA2 (IMPA2 Products)
Background:	Full Gene Name: inositol(myo)-1(or 4)-monophosphatase 2 Synonyms:
Gene ID:	3613
NCBI Accession:	NM_014214

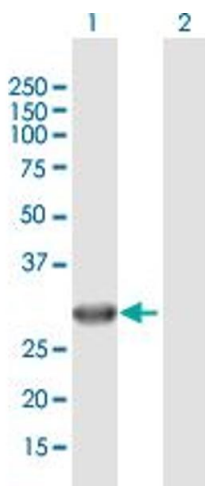
Application Details

Application Notes:	Optimal working dilution should be determined by the investigator.
Restrictions:	For Research Use only

Handling

Buffer:	In 1x PBS, pH 7.4
Handling Advice:	Aliquot to avoid repeated freezing and thawing.
Storage:	-20 °C
Storage Comment:	Store at -20°C or lower. Aliquot to avoid repeated freezing and thawing.

Images



Western Blotting

Image 1. Western Blot analysis of IMPA2 expression in transfected 293T cell line by IMPA2 MaxPab polyclonal antibody.

Lane 1: IMPA2 transfected lysate(31.3 KDa).

Lane 2: Non-transfected lysate.