



[Go to Product page](#)

Datasheet for ABIN1774890
anti-SV2C antibody (AA 1-727)

1 Image

Overview

Quantity:	100 µg
Target:	SV2C
Binding Specificity:	AA 1-727
Reactivity:	Human
Host:	Rabbit
Clonality:	Polyclonal
Conjugate:	This SV2C antibody is un-conjugated
Application:	Western Blotting (WB)

Product Details

Purpose:	Rabbit polyclonal antibody raised against a full-length human SV2C protein.
Immunogen:	SV2C (NP_055794.1, 1 a.a. ~ 727 a.a) full-length human protein.
Sequence:	MEDSYKDRTS LMKGAKDIAR EVKKQTVKKV NQAVDRAQDE YTQRSYSRFQ DEEDDDYYYP AGETYNGEAN DDEGSSEATE GHDEDDEIYE GEYQGIPSMN QAKDSIVSVG QPKGDEYKDR RELESERRAD EEELAQQYEL IIQECGHGRF QWALFFVLGM ALMADGVEVF VVGFVLPSAE TDLCPNSGS GWLGSIVYLG MMVGAFFWGG LADKVGRKQS LLICMSVNGF FAFSSFVQG YGFFLFCRLL SGFGIGGAIP TVFSYFAEVL AREKRGEHLS WLCMFWMIGG IYASAMAWAI IPHYGWSFSM GSAYQFHSWR VVIVCALPC VSSVVALTFM PESPRFLLEV GKHDEAWMIL KLIHDTNMRA RGQPEKVFTV NIKIKTPKID ELIEIESDTG TWYRRCFVRI RTELYGIWLT FMRCFNYPVR DNTIKLTIVW FTLSFGYYGL SVWFPDVIKP LQSDEYALLT RNVERDKYAN FTINFTMENQ IHTGMEYDNG RFIGVKFKSV TFKDSVFKSC TFEDVTSVNT YFKNCTFIDT VFDNTDFEPY KFIDSEFKNC SFFHNKTGCQ ITFDDDISAY WIYFVNFLGT LAVLPGNIVS

Product Details

ALLMDRIGRL TMLGGSMVLS GISCFLLWFG TSESMMIGML CLYNGLTISA WNSLDVVTVE
LYPTDRRATG FGFLNALCKA AAVLGNLIFG SLVSITKSIP ILLASTVLVC GGLVGLCLPD TRTQVLM

Cross-Reactivity: Human

Characteristics: Antibody reactive against mammalian transfected lysate.

Target Details

Target: SV2C

Alternative Name: SV2C ([SV2C Products](#))

Background: Full Gene Name: synaptic vesicle glycoprotein 2C
Synonyms: MGC118874,MGC118875,MGC118876,MGC118877

Gene ID: 22987

NCBI Accession: [NM_014979](#)

Application Details

Application Notes: Optimal working dilution should be determined by the investigator.

Restrictions: For Research Use only

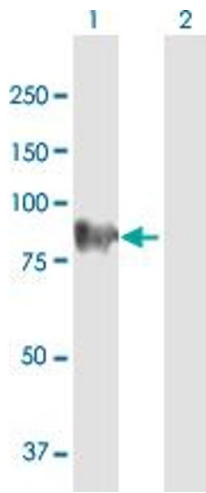
Handling

Buffer: In 1x PBS, pH 7.4

Handling Advice: Aliquot to avoid repeated freezing and thawing.

Storage: -20 °C

Storage Comment: Store at -20°C or lower. Aliquot to avoid repeated freezing and thawing.



Western Blotting

Image 1. Western Blot analysis of SV2C expression in transfected 293T cell line by SV2C MaxPab polyclonal antibody.

Lane 1: SV2C transfected lysate(82.3 KDa).

Lane 2: Non-transfected lysate.