



[Go to Product page](#)

Datasheet for ABIN1774894
anti-TK2 antibody (N-Term)

2 Images

Overview

Quantity:	400 µL
Target:	TK2
Binding Specificity:	N-Term
Reactivity:	Human
Host:	Rabbit
Clonality:	Polyclonal
Conjugate:	This TK2 antibody is un-conjugated
Application:	Western Blotting (WB), ELISA

Product Details

Purpose:	Rabbit polyclonal antibody raised against synthetic peptide of TK2.
Immunogen:	A synthetic peptide (conjugated with KLH) corresponding to N-terminus of human TK2.
Cross-Reactivity:	Human, Mouse

Target Details

Target:	TK2
Abstract:	TK2 Products
Gene ID:	7084
Pathways:	Mitotic G1-G1/S Phases

Application Details

Application Notes: ELISA (1:1000)
Western Blot (1:100-500)
The optimal working dilution should be determined by the end user.

Restrictions: For Research Use only

Handling

Format: Liquid

Buffer: In PBS (0.09 % sodium azide)

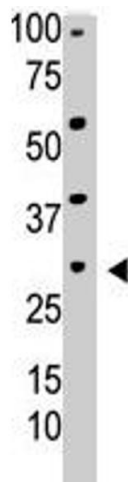
Preservative: Sodium azide

Precaution of Use: This product contains Sodium azide: a POISONOUS AND HAZARDOUS SUBSTANCE which should be handled by trained staff only.

Storage: 4 °C,-20 °C

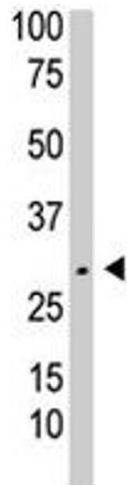
Storage Comment: Store at 4°C. For long term storage store at -20°C.
Aliquot to avoid repeated freezing and thawing.

Images



Western Blotting

Image 1. The TK2 polyclonal antibody is used in Western blot to detect TK2 in HepG2 cell lysate .



Western Blotting

Image 2. The TK2 polyclonal antibody is used in Western blot to detect TK2 in mouse liver tissue lysate .