

Datasheet for ABIN1774924

ABAT Protein (AA 1-116) (GST tag)[Go to Product page](#)**1** Image

Overview

Quantity:	10 µg
Target:	ABAT
Protein Characteristics:	AA 1-116
Origin:	Human
Source:	Wheat germ
Protein Type:	Recombinant
Purification tag / Conjugate:	This ABAT protein is labelled with GST tag.
Application:	Western Blotting (WB), ELISA, Affinity Purification (AP), Antibody Array (AA)

Product Details

Purpose:	ABAT (Human) Recombinant Protein (P01)
Sequence:	MENHHSPKGQ RRFQRKGVIG AVFCRMSQSS PSRQGKEGCC REGTAYAKAY QFMASHLSLG KPVSTGSIPR FNKALFNKQA KCKPNHYSFI GLSMLSPENF SIGCKYSVWF SETKGF
Characteristics:	Human ABAT full-length ORF (AAH08990, 1 a.a. - 116 a.a.) recombinant protein with GST-tag at N-terminal.
Purification:	in vitro wheat germ expression system

Target Details

Target:	ABAT
Alternative Name:	ABAT (ABAT Products)

Target Details

Background: Full Gene Name: 4-aminobutyrate aminotransferase
Synonyms: FLJ17813,GABA-AT,GABAT,NPD009

Gene ID: 18

Pathways: [Monocarboxylic Acid Catabolic Process](#)

Application Details

Application Notes: Optimal working dilution should be determined by the investigator.

Comment: Preparation method: in vitro, wheat germ expression system
Product Quality tested by: 12.5% SDS-PAGE Stained with Coomassie Blue.

Restrictions: For Research Use only

Handling

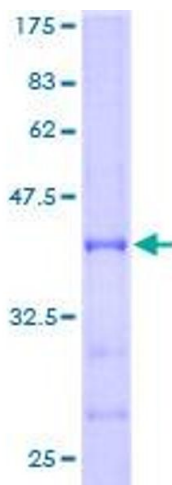
Buffer: 50 mM Tris-HCl, 10 mM reduced Glutathione, pH =8.0 in the elution buffer.

Handling Advice: Aliquot to avoid repeated freezing and thawing.

Storage: -80 °C

Storage Comment: Best use within three months from the date of receipt of this protein.

Images



SDS-PAGE

Image 1.