



[Go to Product page](#)

Datasheet for ABIN1775077

ADCY5 Protein (AA 1152-1261) (GST tag)

1 Image

Overview

Quantity:	10 µg
Target:	ADCY5
Protein Characteristics:	AA 1152-1261
Origin:	Human
Source:	Wheat germ
Protein Type:	Recombinant
Purification tag / Conjugate:	This ADCY5 protein is labelled with GST tag.
Application:	Western Blotting (WB), ELISA, Affinity Purification (AP), Antibody Array (AA)

Product Details

Purpose:	ADCY5 (Human) Recombinant Protein (Q01)
Sequence:	ADFAMKLMQ MKYINEHSFN NFQMKIGLNI GPVVAGVIGA RKPQYDIWGN TVNVASRMDS TGVPDRIQVT TDMYQVLAAN TYQLECRGVV KVKGKGEMMT YFLNGGPPLS
Characteristics:	Human ADCY5 partial ORF (NP_899200, 1152 a.a. - 1261 a.a.) recombinant protein with GST-tag at N-terminal.
Purification:	in vitro wheat germ expression system

Target Details

Target:	ADCY5
Alternative Name:	ADCY5 (ADCY5 Products)

Target Details

Background:	Full Gene Name: adenylate cyclase 5 Synonyms: AC5
Gene ID:	111
NCBI Accession:	NM_183357
Pathways:	EGFR Signaling Pathway , Neurotrophin Signaling Pathway , Thyroid Hormone Synthesis , cAMP Metabolic Process , Myometrial Relaxation and Contraction , G-protein mediated Events , Interaction of EGFR with phospholipase C-gamma

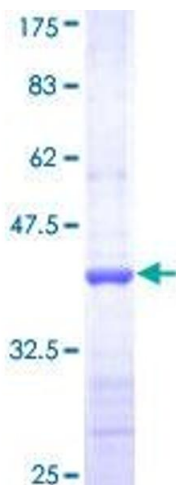
Application Details

Application Notes:	Optimal working dilution should be determined by the investigator.
Comment:	Preparation method: in vitro, wheat germ expression system Product Quality tested by: 12.5% SDS-PAGE Stained with Coomassie Blue.
Restrictions:	For Research Use only

Handling

Buffer:	50 mM Tris-HCl, 10 mM reduced Glutathione, pH =8.0 in the elution buffer.
Handling Advice:	Aliquot to avoid repeated freezing and thawing.
Storage:	-80 °C
Storage Comment:	Best use within three months from the date of receipt of this protein.

Images



SDS-PAGE

Image 1.