

Datasheet for ABIN1775201
Angiotensin II Type-1 Receptor Protein (AA 250-359) (GST tag)



[Go to Product page](#)

1 Image

Overview

Quantity:	10 µg
Target:	Angiotensin II Type-1 Receptor (AGTR1)
Protein Characteristics:	AA 250-359
Origin:	Human
Source:	Wheat germ
Protein Type:	Recombinant
Purification tag / Conjugate:	This Angiotensin II Type-1 Receptor protein is labelled with GST tag.
Application:	Western Blotting (WB), ELISA, Affinity Purification (AP), Antibody Array (AA)

Product Details

Purpose:	AGTR1 (Human) Recombinant Protein (Q01)
Sequence:	FFSWIPHQIF TFLDVLIQLG IIRDCRIADI VDTAMPITIC IAYFNNCLNP LFYGFLGKKF KRYFLQLLKY IPPKAKSHSN LSTKMSTLSY RHSDNVSSST KKPAPCFEVE
Characteristics:	Human AGTR1 partial ORF (AAH22447, 250 a.a. - 359 a.a.) recombinant protein with GST-tag at N-terminal.
Purification:	in vitro wheat germ expression system

Target Details

Target:	Angiotensin II Type-1 Receptor (AGTR1)
Alternative Name:	AGTR1 (AGTR1 Products)

Target Details

Background:	Full Gene Name: angiotensin II receptor, type 1 Synonyms: AG2S,AGTR1A,AGTR1B,AT1,AT1B,AT1R,AT2R1,AT2R1A,AT2R1B,HAT1R
Gene ID:	185
Pathways:	JAK-STAT Signaling , ACE Inhibitor Pathway , Regulation of Systemic Arterial Blood Pressure by Hormones , Feeding Behaviour

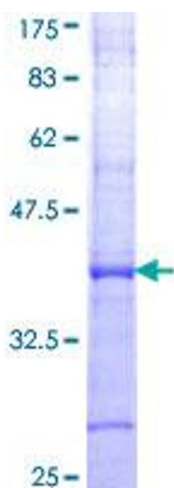
Application Details

Application Notes:	Optimal working dilution should be determined by the investigator.
Comment:	Preparation method: in vitro, wheat germ expression system Product Quality tested by: 12.5% SDS-PAGE Stained with Coomassie Blue.
Restrictions:	For Research Use only

Handling

Buffer:	50 mM Tris-HCl, 10 mM reduced Glutathione, pH =8.0 in the elution buffer.
Handling Advice:	Aliquot to avoid repeated freezing and thawing.
Storage:	-80 °C
Storage Comment:	Best use within three months from the date of receipt of this protein.

Images



SDS-PAGE

Image 1.