

Datasheet for ABIN1775651

**Aspartate beta Hydroxylase Protein (AA 1-210) (GST tag)**[Go to Product page](#)**1** Image

## Overview

Quantity:	10 µg
Target:	Aspartate beta Hydroxylase (ASPH)
Protein Characteristics:	AA 1-210
Origin:	Human
Source:	Wheat germ
Protein Type:	Recombinant
Purification tag / Conjugate:	This Aspartate beta Hydroxylase protein is labelled with GST tag.
Application:	Western Blotting (WB), ELISA, Antibody Array (AA), Affinity Purification (AP)

## Product Details

Purpose:	ASPH (Human) Recombinant Protein (P01)
Sequence:	MAEDKETKHG GHKNGRKGGI SGTSFFTWFM VIALLGWVTS VAVVWFDLVD YEEVLGKLG YDADGDGDFD VDDAKVLLEG PSGVAKRRTK AKVKELTKEE LKKEKEKPES RKESKNEERK KGKKEDVRKD KKIADADLSR KESPKGKKDR EKEKVDLEKS AKTKENRKKS TNMKDVSSKM ASRDKDDRKE SRSSTRYAHL TKGNTQKRNG
Characteristics:	Human ASPH full-length ORF ( NP_115856.1, 1 a.a. - 210 a.a.) recombinant protein with GST-tag at N-terminal.
Purification:	in vitro wheat germ expression system

## Target Details

Target:	Aspartate beta Hydroxylase (ASPH)
---------	-----------------------------------

### Target Details

Alternative Name:	ASPH ( <a href="#">ASPH Products</a> )
Background:	Full Gene Name: aspartate beta-hydroxylase Synonyms: BAH,CASQ2BP1,HAAH,JCTN,junctin
Gene ID:	444
NCBI Accession:	<a href="#">NM_032467</a>
Pathways:	<a href="#">Positive Regulation of Endopeptidase Activity</a>

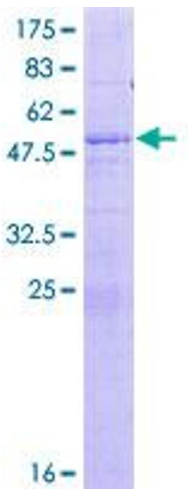
### Application Details

Application Notes:	Optimal working dilution should be determined by the investigator.
Comment:	Preparation method: in vitro, wheat germ expression system Product Quality tested by: 12.5% SDS-PAGE Stained with Coomassie Blue.
Restrictions:	For Research Use only

### Handling

Buffer:	50 mM Tris-HCl, 10 mM reduced Glutathione, pH =8.0 in the elution buffer.
Handling Advice:	Aliquot to avoid repeated freezing and thawing.
Storage:	-80 °C
Storage Comment:	Best use within three months from the date of receipt of this protein.

### Images



SDS-PAGE

Image 1.