



[Go to Product page](#)

Datasheet for ABIN1775683

ATOH1 Protein (AA 1-354) (GST tag)

1 Image

Overview

Quantity:	10 µg
Target:	ATOH1
Protein Characteristics:	AA 1-354
Origin:	Human
Source:	Wheat germ
Protein Type:	Recombinant
Purification tag / Conjugate:	This ATOH1 protein is labelled with GST tag.
Application:	ELISA, Western Blotting (WB), Antibody Array (AA), Affinity Purification (AP)

Product Details

Purpose:	ATOH1 (Human) Recombinant Protein (P01)
Sequence:	MSRLLHAE EW AEVKELGDHH RQPQPHLPQ PPPPPQPPAT LQAREHPVYP PELSLLDSTD PRAWLAPTLQ GICTARAAQY LLHSPELGAS EAAAPRDEVD GRGELVRRSS GGASSKSPG PVKVREQLCK LKGGVVVDEL GCSRQRAPSS KQVNGVQKQR RLAANARERR RMHGLNHAFD QLRNVIPSFN NDKKLSKYET LQMAQIYINA LSELLQTPSG GEQPPPPPAS CKSDHHHLRT AASYEGGAGN ATAAGAQQAS GGSQRPTPPG SCRTRFSAPA SAGGYSVQLD ALHFSTFEDS ALTAMMAQKN LSPSLPGSIL QPVQEENSKT SPRSHRSDGE FSPHSHYSDS DEAS
Characteristics:	Human ATOH1 full-length ORF (NP_005163.1, 1 a.a. - 354 a.a.) recombinant protein with GST-tag at N-terminal.
Purification:	in vitro wheat germ expression system

Target Details

Target:	ATOH1
Alternative Name:	ATOH1 (ATOH1 Products)
Background:	Full Gene Name: atonal homolog 1 (Drosophila) Synonyms: ATH1,HATH1,MATH-1,bHLHa14
Gene ID:	474
NCBI Accession:	NM_005172

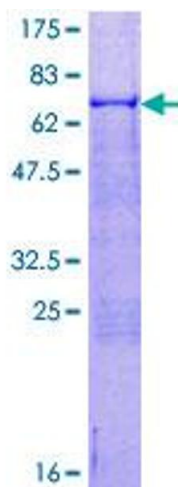
Application Details

Application Notes:	Optimal working dilution should be determined by the investigator.
Comment:	Preparation method: in vitro, wheat germ expression system Product Quality tested by: 12.5% SDS-PAGE Stained with Coomassie Blue.
Restrictions:	For Research Use only

Handling

Buffer:	50 mM Tris-HCl, 10 mM reduced Glutathione, pH =8.0 in the elution buffer.
Handling Advice:	Aliquot to avoid repeated freezing and thawing.
Storage:	-80 °C
Storage Comment:	Best use within three months from the date of receipt of this protein.

Images



SDS-PAGE

Image 1.