



[Go to Product page](#)

Datasheet for ABIN1776059

C1R Protein (AA 1-705) (GST tag)

1 Image

Overview

| | |
|-------------------------------|---|
| Quantity: | 10 µg |
| Target: | C1R |
| Protein Characteristics: | AA 1-705 |
| Origin: | Human |
| Source: | Wheat germ |
| Protein Type: | Recombinant |
| Purification tag / Conjugate: | This C1R protein is labelled with GST tag. |
| Application: | Western Blotting (WB), ELISA, Antibody Array (AA), Affinity Purification (AP) |

Product Details

| | |
|-----------|---|
| Purpose: | C1R (Human) Recombinant Protein (P01) |
| Sequence: | MWLLYLLVPA LFCRAGGSIP IPQKLFGEVT SPLFPKPYPN NFETTTVITV PTGYRVKLVF QQFDLEPSEG CFYDYVKISA DKKSLGRFCG QLGSPNGNP GKKEFMSQGN KMLLTFHTDF SNEENGTIMF YKGLAYYQA VDLDECASRS KLGEEDPQPQ CQHLCHNYVG GYFCSCRPGY ELQEDRHSCQ AECSSSELYTE ASGYISSLEY PRSYPDLRC NYSIRVERGL TLHLKFLEPF DIDDHQQVHC PYDQLQIYAN GKNIGEF CGK QRPDLDTSS NAVDLLFFTD ESGDSRGWKL RYTTEIHKCP QPKTLDEFTI IQNLQPQYQF RDYFIATCKQ GYQLIEGNQV LHSFTAVCQD DGTWHRAMPR CKIKDCGQPR NLPNGDFRYT TTMGVNTYKA RIQYYCHEPY YKMQTRAGSR ESEQGVYTCT AQGIWKNEQK GEKIPRCLPV CGKPVNPVEQ RQRIIGGQKA KMGNFPWQVF TNIHGRGGGA LLGDRWILTA AHTLYPKEHE AQSNASLDVF LGHTNVEELM KLGNIPIRRV SVHPDYRQDE SYNFECDIAL LELENSVTLG PNLLPICLPD SDTFYDLGLM GYVSGFGVME EKIAHDLRFV RLPVANPQAC ENWLRGKNRM DVFSQNMFCA GHPSLKQDAC QGDSGGVFAV |

Product Details

RDPNTDRWVA TGIVSWGIGC SRGYGFYTKV LNYVDWIKKE MEEED

| | |
|------------------|--|
| Characteristics: | Human C1R full-length ORF (AAH35220, 1 a.a. - 705 a.a.) recombinant protein with GST-tag at N-terminal. |
| Purification: | in vitro wheat germ expression system |

Target Details

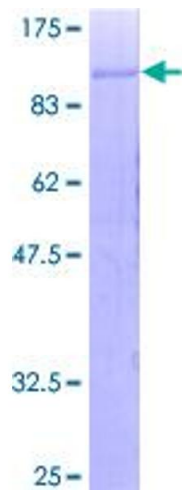
| | |
|-------------------|---|
| Target: | C1R |
| Alternative Name: | C1R (C1R Products) |
| Background: | Full Gene Name: complement component 1, r subcomponent Synonyms: |
| Gene ID: | 715 |
| Pathways: | Complement System |

Application Details

| | |
|--------------------|--|
| Application Notes: | Optimal working dilution should be determined by the investigator. |
| Comment: | Preparation method: in vitro, wheat germ expression system Product Quality tested by: 12.5% SDS-PAGE Stained with Coomassie Blue. |
| Restrictions: | For Research Use only |

Handling

| | |
|------------------|---|
| Buffer: | 50 mM Tris-HCl, 10 mM reduced Glutathione, pH =8.0 in the elution buffer. |
| Handling Advice: | Aliquot to avoid repeated freezing and thawing. |
| Storage: | -80 °C |
| Storage Comment: | Best use within three months from the date of receipt of this protein. |



SDS-PAGE

Image 1.