



[Go to Product page](#)

Datasheet for ABIN1776280

## Caspase 7 Protein (AA 1-100) (GST tag)

### 1 Image

#### Overview

Quantity:	10 µg
Target:	Caspase 7 (CASP7)
Protein Characteristics:	AA 1-100
Origin:	Human
Source:	Wheat germ
Protein Type:	Recombinant
Purification tag / Conjugate:	This Caspase 7 protein is labelled with GST tag.
Application:	Western Blotting (WB), ELISA, Antibody Array (AA), Affinity Purification (AP)

#### Product Details

Purpose:	CASP7 (Human) Recombinant Protein (Q01)
Sequence:	MADEQGCIEE QGVEDSANED SVDAKPDRSS FVPSLFSSKKK KNVTMRSIKT TRDRVPTYQY NMNFEKLGKC IINNKNFDK VTGMGVRNGT DKDAEALFKC
Characteristics:	Human CASP7 partial ORF ( AAH15799, 1 a.a. - 100 a.a.) recombinant protein with GST-tag at N-terminal.
Purification:	in vitro wheat germ expression system

#### Target Details

Target:	Caspase 7 (CASP7)
Alternative Name:	CASP7 ( <a href="#">CASP7 Products</a> )

## Target Details

Background:	Full Gene Name: caspase 7, apoptosis-related cysteine peptidase Synonyms: CMH-1,ICE-LAP3,MCH3
Gene ID:	840
Pathways:	<a href="#">Apoptosis</a> , <a href="#">Caspase Cascade in Apoptosis</a> , <a href="#">Positive Regulation of Endopeptidase Activity</a>

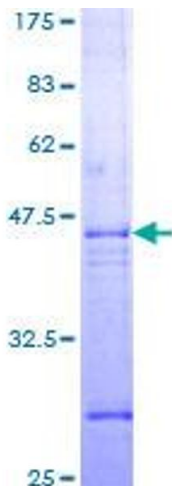
## Application Details

Application Notes:	Optimal working dilution should be determined by the investigator.
Comment:	Preparation method: in vitro, wheat germ expression system Product Quality tested by: 12.5% SDS-PAGE Stained with Coomassie Blue.
Restrictions:	For Research Use only

## Handling

Buffer:	50 mM Tris-HCl, 10 mM reduced Glutathione, pH =8.0 in the elution buffer.
Handling Advice:	Aliquot to avoid repeated freezing and thawing.
Storage:	-80 °C
Storage Comment:	Best use within three months from the date of receipt of this protein.

## Images



### SDS-PAGE

Image 1.