

Datasheet for ABIN1776560  
**CDC20 Protein (AA 1-499) (GST tag)**



[Go to Product page](#)

1 Image

## Overview

Quantity:	10 µg
Target:	CDC20
Protein Characteristics:	AA 1-499
Origin:	Human
Source:	Wheat germ
Protein Type:	Recombinant
Purification tag / Conjugate:	This CDC20 protein is labelled with GST tag.
Application:	Western Blotting (WB), ELISA, Antibody Array (AA), Affinity Purification (AP)

## Product Details

Purpose:	CDC20 (Human) Recombinant Protein (P01)
Sequence:	<p>MAQFAFESDL HSLQLDAPI PNAPPARWQR KAKEAAGPAP SPMRAANRSH SAGRTPGRTP            GKSSSKVQTT PSKPGGDRIYI PHRSAAQMEV ASFLLSKENQ PENSQTPTKK EHQAQAVLNL            NGFDVEEAKI LRLSGKPQNA PEGYQNRLKV LYSQKATPGS SRKTCRYIPS LPDRILDAPE            IRNDYYLNLV DWSSGNVLAV ALDNSVYLWS ASSGDILQLL QMEQPGEYIS SVAWIKEGNY            LAVGTSSAEV QLWDVQQQKR LRNMTSHSAR VGSLSWNSYI LSSGSRSGHI HHHHDVRAEH            HVATLSGHSQ EVCGLRWAPD GRHLASGGND NLVNVWPSAP GEGGWVPLQT FTQHQAQAVKA            VAWCPWQSNV LATGGGTSDR HIRIWNVCSG ACLSAVDAHS QVCSILWSPH YKELISGHGF            AQNQLVIWKY PTMAKVAELK GHTSRVLSLT MSPDGATVAS AAADETLRLW RCFELDPARR            REREKASAAK SSLIHQGIR</p>
Characteristics:	Human CDC20 full-length ORF ( AAH00624.1, 1 a.a. - 499 a.a.) recombinant protein with GST-tag at N-terminal.

## Product Details

---

Purification: in vitro wheat germ expression system

## Target Details

---

Target: CDC20

Alternative Name: CDC20 ([CDC20 Products](#))

Background: Full Gene Name: cell division cycle 20 homolog (*S. cerevisiae*)  
Synonyms: CDC20A,MGC102824,bA276H19.3,p55CDC

Gene ID: 991

## Application Details

---

Application Notes: Optimal working dilution should be determined by the investigator.

Comment: Preparation method: in vitro, wheat germ expression system  
Product Quality tested by: 12.5% SDS-PAGE Stained with Coomassie Blue.

Restrictions: For Research Use only

## Handling

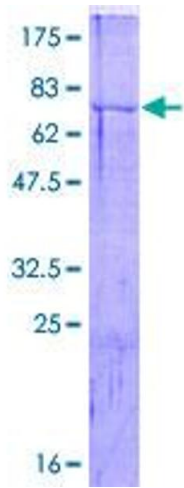
---

Buffer: 50 mM Tris-HCl, 10 mM reduced Glutathione, pH =8.0 in the elution buffer.

Handling Advice: Aliquot to avoid repeated freezing and thawing.

Storage: -80 °C

Storage Comment: Best use within three months from the date of receipt of this protein.



### SDS-PAGE

Image 1.