



Datasheet for ABIN1776703

CEBPB Protein (AA 256-344) (GST tag)



[Go to Product page](#)

1 Image

Overview

Quantity:	10 µg
Target:	CEBPB
Protein Characteristics:	AA 256-344
Origin:	Human
Source:	Wheat germ
Protein Type:	Recombinant
Purification tag / Conjugate:	This CEBPB protein is labelled with GST tag.
Application:	Western Blotting (WB), ELISA, Antibody Array (AA), Affinity Purification (AP)

Product Details

Purpose:	CEBPB (Human) Recombinant Protein (Q01)
Sequence:	PSQVKSKAKK TVDKHSDEYK IRRERNIAV RKS RDKAKMR NLETQHKVLE LTAENERLQK KVEQLSRELS TLRNLFKQLP EPLLASSGH
Characteristics:	Human CEBPB partial ORF (NP_005185, 256 a.a. - 344 a.a.) recombinant protein with GST-tag at N-terminal.
Purification:	in vitro wheat germ expression system

Target Details

Target:	CEBPB
Alternative Name:	CEBPB (CEBPB Products)

Target Details

Background: Full Gene Name: CCAAT/enhancer binding protein (C/EBP), beta
Synonyms: C/EBP-beta,CRP2,IL6DBP,LAP,MGC32080,NF-IL6,TCF5

Gene ID: 1051

NCBI Accession: [NM_005194](#)

Pathways: [Interferon-gamma Pathway](#), [Autophagy](#), [Brown Fat Cell Differentiation](#)

Application Details

Application Notes: Optimal working dilution should be determined by the investigator.

Comment: Preparation method: in vitro, wheat germ expression system
Product Quality tested by: 12.5% SDS-PAGE Stained with Coomassie Blue.

Restrictions: For Research Use only

Handling

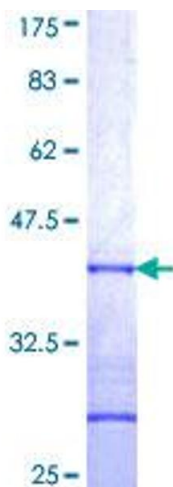
Buffer: 50 mM Tris-HCl, 10 mM reduced Glutathione, pH =8.0 in the elution buffer.

Handling Advice: Aliquot to avoid repeated freezing and thawing.

Storage: -80 °C

Storage Comment: Best use within three months from the date of receipt of this protein.

Images



SDS-PAGE

Image 1.