

Datasheet for ABIN1776902
CLCNKB Protein (AA 1-462) (GST tag)



[Go to Product page](#)

1 Image

Overview

Quantity:	10 µg
Target:	CLCNKB
Protein Characteristics:	AA 1-462
Origin:	Human
Source:	Wheat germ
Protein Type:	Recombinant
Purification tag / Conjugate:	This CLCNKB protein is labelled with GST tag.
Application:	ELISA, Western Blotting (WB), Antibody Array (AA), Affinity Purification (AP)

Product Details

Purpose:	CLCNKB (Human) Recombinant Protein (P01)
Sequence:	MEEFVGLREG SSGNPVTLQE LWGPCPRIRR GIRGGLEWLK QKLFRLGEDW YFLMTLGVLM ALVSCAMDLA VESVVAHQW LYREIGDSSL LRYLSWTVYP VALVSFSSGF SQSITPSSGG SGIPEVKTML AGVVLEDYLD IKNFGAKVVG LSCTLACGST LFLGKVGPFV HLSVMMAAYL GRVRTTTIGE PENKSKPVYS ALATLVLASI TYPPSAGRFL ASRLSMKQHL DSLFDNHSWA LMTQNSSPPW PEELDPQHLW WEWYHPRFTI FGTLAFLVM KFWMLILATT IPMPAGYFMP IFVYGAAIGR LFGETLSFIF PEGIVAGGIT NPIMPGGYAL AGAAAFSGAV THTISTALLA FEVTGQIVHA LPVLMVLAAL NAIQSCQPS FYDGTIVVKK LPYLPRILGR NIGSHRVRVE HFMNHSITTL AITLMNDEIG VHCHQGQAQM ASGVVWFPVR GS
Characteristics:	Human CLCNKB full-length ORF (AAH20873.1, 1 a.a. - 462 a.a.) recombinant protein with GST-tag at N-terminal.

Product Details

Purification: in vitro wheat germ expression system

Target Details

Target: CLCNKB

Alternative Name: CLCNKB ([CLCNKB Products](#))

Background: Full Gene Name: chloride channel Kb
Synonyms: CLCKB,CIC-K2,MGC24087,hCIC-Kb

Gene ID: 1188

Application Details

Application Notes: Optimal working dilution should be determined by the investigator.

Comment: Preparation method: in vitro, wheat germ expression system
Product Quality tested by: 12.5% SDS-PAGE Stained with Coomassie Blue.

Restrictions: For Research Use only

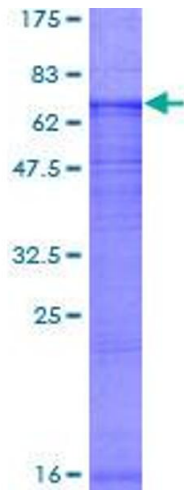
Handling

Buffer: 50 mM Tris-HCl, 10 mM reduced Glutathione, pH =8.0 in the elution buffer.

Handling Advice: Aliquot to avoid repeated freezing and thawing.

Storage: -80 °C

Storage Comment: Best use within three months from the date of receipt of this protein.



SDS-PAGE

Image 1.