

Datasheet for ABIN1777308

NK2 Homeobox 5 Protein (NKX2-5) (AA 1-324) (GST tag)



[Go to Product page](#)

1 Image

Overview

Quantity:	10 µg
Target:	NK2 Homeobox 5 (NKX2-5)
Protein Characteristics:	AA 1-324
Origin:	Human
Source:	Wheat germ
Protein Type:	Recombinant
Purification tag / Conjugate:	This NK2 Homeobox 5 protein is labelled with GST tag.
Application:	ELISA, Western Blotting (WB), Affinity Purification (AP), Antibody Array (AA)

Product Details

Purpose:	NKX2-5 (Human) Recombinant Protein (P01)
Sequence:	MFPSPALTPT PFSVKDILNL EQQQRSLAAA GELSARLEAT LAPSSCMLAA FKPEAYAGPE AAAPGLPELR AELGRAPSPA KCASAFPAAP AFYPRAYSDP DPAKDPRAEK KELCALQKAV ELEKTEADNA ERPRARRRRK PRVLFSQAQV YELERRFKQQ RYLSAPERDQ LASVLKLTST QVKIWFQNRK YKCKRQRQDQ TLELVGLPPP PPPPARRIAV PVLVRDGKPC LGDSAPYAPA YGVGLNPYGY NAYPAYPGYG GAACSPGYSC TAAYPAGPSP AQPATAAANN NFNVFGVGD NAVQSPGIPQ SNSGVSTLHG IRAW
Characteristics:	Human NKX2-5 full-length ORF (AAH25711, 1 a.a. - 324 a.a.) recombinant protein with GST-tag at N-terminal.
Purification:	in vitro wheat germ expression system

Target Details

Target:	NK2 Homeobox 5 (NKX2-5)
Alternative Name:	NKX2-5 (NKX2-5 Products)
Background:	Full Gene Name: NK2 transcription factor related, locus 5 (Drosophila) Synonyms: CHNG5,CSX,CSX1,NKX2.5,NKX2E,NKX4-1
Gene ID:	1482
Pathways:	Regulation of Muscle Cell Differentiation, Skeletal Muscle Fiber Development

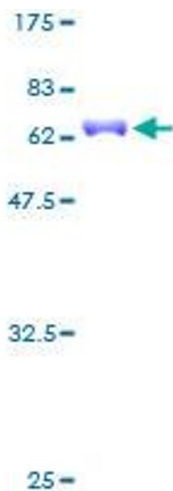
Application Details

Application Notes:	Optimal working dilution should be determined by the investigator.
Comment:	Preparation method: in vitro, wheat germ expression system Product Quality tested by: 12.5% SDS-PAGE Stained with Coomassie Blue.
Restrictions:	For Research Use only

Handling

Buffer:	50 mM Tris-HCl, 10 mM reduced Glutathione, pH =8.0 in the elution buffer.
Handling Advice:	Aliquot to avoid repeated freezing and thawing.
Storage:	-80 °C
Storage Comment:	Best use within three months from the date of receipt of this protein.

Images



SDS-PAGE

Image 1.