



[Go to Product page](#)

Datasheet for ABIN1777994

EGR2 Protein (AA 1-476) (GST tag)

1 Image

Overview

Quantity:	10 µg
Target:	EGR2
Protein Characteristics:	AA 1-476
Origin:	Human
Source:	Wheat germ
Protein Type:	Recombinant
Purification tag / Conjugate:	This EGR2 protein is labelled with GST tag.
Application:	Western Blotting (WB), ELISA, Antibody Array (AA), Affinity Purification (AP)

Product Details

Purpose:	EGR2 (Human) Recombinant Protein (P01)
Sequence:	MMTAKAVDKI PVTLSGFVHQ LSDNIYPVED LAATSVTIFP NAELGGPFDQ MNGVAGDGMI NIDMTGEKRS LDLPYPSSFA PVSAPRNQTF TYMGKFSIDP QYPGASCYPE GIINIVSAGI LQGVTPAST TASSSVTSAS PNPLATGLPG VCTMSQTQPD LDHLYSPPPP PPPYSGCAGD LYQDPSAFLS AATTSTSSSL AYPPPPSYPS PKPATDPGLF PMIPDYPGFF PSQCQRDLHG TAGPDRKFPF CPLDTRLVPP PLTPLSTIRN FTLGGPSAGV TGPGASGGSE GPRLPGSSSA AAAAAAAAAY NPHHLPLRPI LRPRKYPNRP SKTPVHERPY PCPAEGCDRR FSRSEDLTRH IRIHTGHKPF QCRICMRNFS RSDHLTTHIR THTGEKPFAC DYCGRKFARS DERKRHTKIH LRQKERKSSA PSASVPAPST ASCSGGVQPG GTLCSSNSSS LGGGPLAPCS SRTTRTP
Characteristics:	Human EGR2 full-length ORF (NP_000390.2, 1 a.a. - 476 a.a.) recombinant protein with GST-tag at N-terminal.

Product Details

Purification: in vitro wheat germ expression system

Target Details

Target: EGR2

Alternative Name: EGR2 ([EGR2 Products](#))

Background: Full Gene Name: early growth response 2 (Krox-20 homolog, Drosophila)
Synonyms: AT591,CMT1D,CMT4E,DKFZp686J1957,FLJ14547,KROX20

Gene ID: 1959

NCBI Accession: [NM_000399](#)

Application Details

Application Notes: Optimal working dilution should be determined by the investigator.

Comment: Preparation method: in vitro, wheat germ expression system
Product Quality tested by: 12.5% SDS-PAGE Stained with Coomassie Blue.

Restrictions: For Research Use only

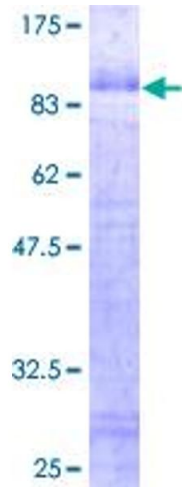
Handling

Buffer: 50 mM Tris-HCl, 10 mM reduced Glutathione, pH =8.0 in the elution buffer.

Handling Advice: Aliquot to avoid repeated freezing and thawing.

Storage: -80 °C

Storage Comment: Best use within three months from the date of receipt of this protein.



SDS-PAGE

Image 1.