



[Go to Product page](#)

Datasheet for ABIN1778152

Stomatin Protein (STOM) (AA 59-142) (GST tag)

1 Image

Overview

Quantity:	10 µg
Target:	Stomatin (STOM)
Protein Characteristics:	AA 59-142
Origin:	Human
Source:	Wheat germ
Protein Type:	Recombinant
Purification tag / Conjugate:	This Stomatin protein is labelled with GST tag.
Application:	ELISA, Western Blotting (WB), Affinity Purification (AP), Antibody Array (AA)

Product Details

Purpose:	STOM (Human) Recombinant Protein (Q01)
Sequence:	EYERAIIFRL GRILQGGAKG PGLFFILPCT DSFIKVD MRT ISFDIPPQEI LTKDSVTISV DGVVYYRVQN ATLAVANITN ADSA
Characteristics:	Human STOM partial ORF (NP_004090, 59 a.a. - 142 a.a.) recombinant protein with GST-tag at N-terminal.
Purification:	in vitro wheat germ expression system

Target Details

Target:	Stomatin (STOM)
Alternative Name:	STOM (STOM Products)

Target Details

Background:	Full Gene Name: stomatin Synonyms: BND7,EPB7,EPB72
Gene ID:	2040
NCBI Accession:	NM_004099
Pathways:	SARS-CoV-2 Protein Interactome

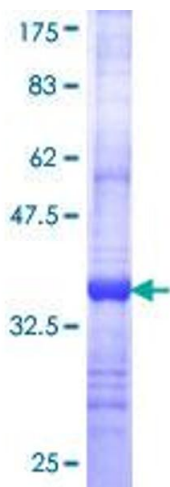
Application Details

Application Notes:	Optimal working dilution should be determined by the investigator.
Comment:	Preparation method: in vitro, wheat germ expression system Product Quality tested by: 12.5% SDS-PAGE Stained with Coomassie Blue.
Restrictions:	For Research Use only

Handling

Buffer:	50 mM Tris-HCl, 10 mM reduced Glutathione, pH =8.0 in the elution buffer.
Handling Advice:	Aliquot to avoid repeated freezing and thawing.
Storage:	-80 °C
Storage Comment:	Best use within three months from the date of receipt of this protein.

Images



SDS-PAGE

Image 1.