



[Go to Product page](#)

Datasheet for ABIN1778666

CENPI Protein (AA 471-522) (GST tag)

1 Image

Overview

Quantity:	10 µg
Target:	CENPI
Protein Characteristics:	AA 471-522
Origin:	Human
Source:	Wheat germ
Protein Type:	Recombinant
Purification tag / Conjugate:	This CENPI protein is labelled with GST tag.
Application:	Western Blotting (WB), ELISA, Antibody Array (AA), Affinity Purification (AP)

Product Details

Purpose:	FSHPRH1 (Human) Recombinant Protein (Q01)
Sequence:	KPLLDHDLAQ LFFTSTIYFK CSVLQSLKEL LQNWLLWLSM DIHMKPVTNS PL
Characteristics:	Human FSHPRH1 partial ORF (NP_006724, 471 a.a. - 522 a.a.) recombinant protein with GST-tag at N-terminal.
Purification:	in vitro wheat germ expression system

Target Details

Target:	CENPI
Alternative Name:	CENPI (CENPI Products)
Background:	Full Gene Name: centromere protein I

Target Details

Synonyms: CENP-I,FSHPRH1,LRPR1,Mis6

Gene ID: 2491

NCBI Accession: [NM_006733](#)

Application Details

Application Notes: Optimal working dilution should be determined by the investigator.

Comment: Preparation method: in vitro, wheat germ expression system
Product Quality tested by: 12.5% SDS-PAGE Stained with Coomassie Blue.

Restrictions: For Research Use only

Handling

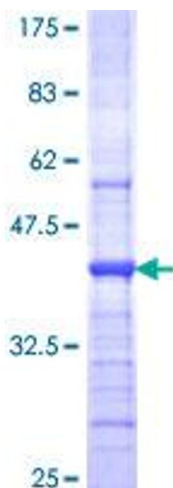
Buffer: 50 mM Tris-HCl, 10 mM reduced Glutathione, pH =8.0 in the elution buffer.

Handling Advice: Aliquot to avoid repeated freezing and thawing.

Storage: -80 °C

Storage Comment: Best use within three months from the date of receipt of this protein.

Images



SDS-PAGE

Image 1.