

Datasheet for ABIN1779588

HLA-DOA Protein (AA 28-125) (GST tag)



[Go to Product page](#)

1 Image

Overview

Quantity:	10 µg
Target:	HLA-DOA
Protein Characteristics:	AA 28-125
Origin:	Human
Source:	Wheat germ
Protein Type:	Recombinant
Purification tag / Conjugate:	This HLA-DOA protein is labelled with GST tag.
Application:	ELISA, Western Blotting (WB), Affinity Purification (AP), Antibody Array (AA)

Product Details

Purpose:	HLA-DOA (Human) Recombinant Protein (Q01)
Sequence:	ADHMGSYGPA FYQSYGASGQ FTHEFDDEEQL FSVDLKKSEA VWRLPEFGDF ARFDPQGGLA GIAAIKAHLD ILVERSNRSR AINVPPRVTV LPKSRVEL
Characteristics:	Human HLA-DOA partial ORF (NP_002110.1, 28 a.a. - 125 a.a.) recombinant protein with GST-tag at N-terminal.
Purification:	in vitro wheat germ expression system

Target Details

Target:	HLA-DOA
Alternative Name:	HLA-DOA (HLA-DOA Products)

Target Details

Background:	Full Gene Name: major histocompatibility complex, class II, DO alpha Synonyms: HLA-DNA,HLA-DZA,HLADZ
Gene ID:	3111
NCBI Accession:	NM_002119

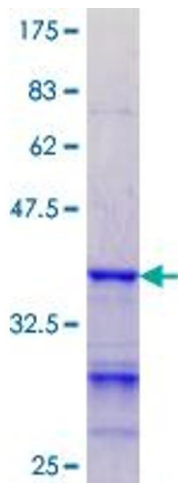
Application Details

Application Notes:	Optimal working dilution should be determined by the investigator.
Comment:	Preparation method: in vitro, wheat germ expression system Product Quality tested by: 12.5% SDS-PAGE Stained with Coomassie Blue.
Restrictions:	For Research Use only

Handling

Buffer:	50 mM Tris-HCl, 10 mM reduced Glutathione, pH =8.0 in the elution buffer.
Handling Advice:	Aliquot to avoid repeated freezing and thawing.
Storage:	-80 °C
Storage Comment:	Best use within three months from the date of receipt of this protein.

Images



SDS-PAGE

Image 1.