



[Go to Product page](#)

Datasheet for ABIN1780259

INHBB Protein (AA 1-407) (GST tag)

1 Image

Overview

Quantity:	10 µg
Target:	INHBB
Protein Characteristics:	AA 1-407
Origin:	Human
Source:	Wheat germ
Protein Type:	Recombinant
Purification tag / Conjugate:	This INHBB protein is labelled with GST tag.
Application:	Western Blotting (WB), ELISA, Affinity Purification (AP), Antibody Array (AA)

Product Details

Purpose:	INHBB (Human) Recombinant Protein (P01)
Sequence:	MDGLPGRALG AACLLLLAAG WLGPEAWGSP TPPPTPAAQP PPPPPGSPGG SQDTCTSCGG FRRPEELGRV DGDFLEAVKR HILSRLQMRG RPNITHAVPK AAMVTALRKL HAGKVREDGR VEIPHLDGHA SPGADGQERV SEIISFAETD GLASSRVRLY FFISNEGNQN LFFVQASLWL YLKLLPYVLE KGSRRKVRVK VYFQEQGHGD RWNMVEKRVD LKRSGWHTFP LTEAIQALFE RGERRLNLDV QCDCSQELAV VPVFVDPGEE SHRPFVVVQA RLGDSRHRIR KRGLECDGRT NLCCRQQFFI DFRLIGWNDW IIAPTSYYGN YCEGSCPAYL AGVPGSASSF HTAVVNQYRM RGLNPGTVNS CCIPTKLSTM SMLYFDDEYN IVKRDVPNMI VEECGCA
Characteristics:	Human INHBB full-length ORF (AAH30029.1, 1 a.a. - 407 a.a.) recombinant protein with GST-tag at N-terminal.
Purification:	in vitro wheat germ expression system

Target Details

Target:	INHBB
Alternative Name:	INHBB (INHBB Products)
Background:	Full Gene Name: inhibin, beta B Synonyms: MGC157939
Gene ID:	3625
Pathways:	Peptide Hormone Metabolism , Hormone Activity , Negative Regulation of Hormone Secretion

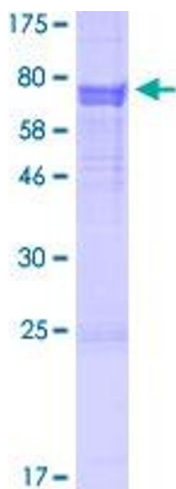
Application Details

Application Notes:	Optimal working dilution should be determined by the investigator.
Comment:	Preparation method: in vitro, wheat germ expression system Product Quality tested by: 12.5% SDS-PAGE Stained with Coomassie Blue.
Restrictions:	For Research Use only

Handling

Buffer:	50 mM Tris-HCl, 10 mM reduced Glutathione, pH =8.0 in the elution buffer.
Handling Advice:	Aliquot to avoid repeated freezing and thawing.
Storage:	-80 °C
Storage Comment:	Best use within three months from the date of receipt of this protein.

Images



SDS-PAGE

Image 1.