



[Go to Product page](#)

Datasheet for ABIN1780323

ISL1 Protein (AA 1-346) (GST tag)

1 Image

Overview

Quantity:	10 µg
Target:	ISL1
Protein Characteristics:	AA 1-346
Origin:	Human
Source:	Wheat germ
Protein Type:	Recombinant
Purification tag / Conjugate:	This ISL1 protein is labelled with GST tag.
Application:	Western Blotting (WB), ELISA, Affinity Purification (AP), Antibody Array (AA)

Product Details

Purpose:	ISL1 (Human) Recombinant Protein (P01)
Sequence:	MGDPPKKKRL ISLCVCGGNQ IHDQYILRVS PDLEWHAACL KCAECNQYLD ESCTCFVRDG KTYCKRDYIR LYGKCAKCS IGFSKNDFVM RARSKVYHIE CFRCVACSRQ LIPGDEFALR EDGLFCRADH DVVERASLGA GDPLSPLHPA RPLQMAAEPI SARQPALRPH VHKQPEKTTR VRTVLNEKQL HTLRTCYAAN PRPDALMKEQ LVEMTGLSPR VIRVWFQNKR CKDKKRSIMM KQLQQQPND KTNIQGMTGT PMVAASPERH DGGLQANPVE VQSYQPPWKV LSDFALQSDI DQPAFQQLVN FSEGGPGSNS TGSEVASMSS QLPDTPNSMV ASPIEA
Characteristics:	Human ISL1 full-length ORF (NP_002193.1, 1 a.a. - 346 a.a.) recombinant protein with GST-tag at N-terminal.
Purification:	in vitro wheat germ expression system

Target Details

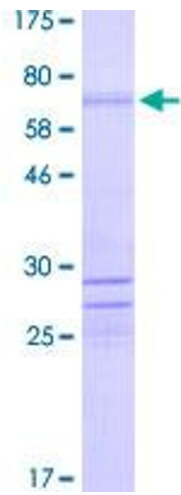
Target:	ISL1
Alternative Name:	ISL1 (ISL1 Products)
Background:	Full Gene Name: ISL LIM homeobox 1 Synonyms: Isl-1
Gene ID:	3670
NCBI Accession:	NM_002202
Pathways:	Positive Regulation of Peptide Hormone Secretion , Intracellular Steroid Hormone Receptor Signaling Pathway , Peptide Hormone Metabolism , Regulation of Intracellular Steroid Hormone Receptor Signaling , Nuclear Hormone Receptor Binding , Chromatin Binding

Application Details

Application Notes:	Optimal working dilution should be determined by the investigator.
Comment:	Preparation method: in vitro, wheat germ expression system Product Quality tested by: 12.5% SDS-PAGE Stained with Coomassie Blue.
Restrictions:	For Research Use only

Handling

Buffer:	50 mM Tris-HCl, 10 mM reduced Glutathione, pH =8.0 in the elution buffer.
Handling Advice:	Aliquot to avoid repeated freezing and thawing.
Storage:	-80 °C
Storage Comment:	Best use within three months from the date of receipt of this protein.



SDS-PAGE

Image 1.