



[Go to Product page](#)

Datasheet for ABIN1780979

CHST6 Protein (AA 296-395) (GST tag)

1 Image

Overview

Quantity:	10 µg
Target:	CHST6
Protein Characteristics:	AA 296-395
Origin:	Human
Source:	Wheat germ
Protein Type:	Recombinant
Purification tag / Conjugate:	This CHST6 protein is labelled with GST tag.
Application:	ELISA, Western Blotting (WB), Antibody Array (AA), Affinity Purification (AP)

Product Details

Purpose:	CHST6 (Human) Recombinant Protein (Q01)
Sequence:	TPQLEAWIHN ITHGSGPGAR REAFKTSSRN ALNVSQAWRH ALPFAKIRRV QELCAGALQL LGYRPVYSED EQRNLALDLV LPRGLNGFTW ASSTASHPRN
Characteristics:	Human CHST6 partial ORF (NP_067628, 296 a.a. - 395 a.a.) recombinant protein with GST-tag at N-terminal.
Purification:	in vitro wheat germ expression system

Target Details

Target:	CHST6
Alternative Name:	CHST6 (CHST6 Products)

Target Details

Background:	Full Gene Name: carbohydrate (N-acetylglucosamine 6-O) sulfotransferase 6 Synonyms: MCDC1
Gene ID:	4166
NCBI Accession:	NM_021615
Pathways:	Glycosaminoglycan Metabolic Process

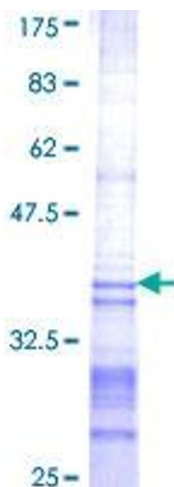
Application Details

Application Notes:	Optimal working dilution should be determined by the investigator.
Comment:	Preparation method: in vitro, wheat germ expression system Product Quality tested by: 12.5% SDS-PAGE Stained with Coomassie Blue.
Restrictions:	For Research Use only

Handling

Buffer:	50 mM Tris-HCl, 10 mM reduced Glutathione, pH =8.0 in the elution buffer.
Handling Advice:	Aliquot to avoid repeated freezing and thawing.
Storage:	-80 °C
Storage Comment:	Best use within three months from the date of receipt of this protein.

Images



SDS-PAGE

Image 1.