

Datasheet for ABIN1781242  
**MOS Protein (AA 247-346) (GST tag)**



[Go to Product page](#)

1 Image

Overview

Quantity:	10 µg
Target:	MOS
Protein Characteristics:	AA 247-346
Origin:	Human
Source:	Wheat germ
Protein Type:	Recombinant
Purification tag / Conjugate:	This MOS protein is labelled with GST tag.
Application:	ELISA, Western Blotting (WB), Affinity Purification (AP), Antibody Array (AA)

Product Details

Purpose:	MOS (Human) Recombinant Protein (Q01)
Sequence:	APELLKGEGV TPKADIYSFA ITLWQMTTKQ APYSGERQHI LYAVVAYDLR PSLSAAVFED SLPGQRLGDV IQRCWRPSAA QRPSARLLLV DLTSLKAELG
Characteristics:	Human MOS partial ORF ( NP_005363, 247 a.a. - 346 a.a.) recombinant protein with GST-tag at N-terminal.
Purification:	in vitro wheat germ expression system

Target Details

Target:	MOS
Alternative Name:	MOS ( <a href="#">MOS Products</a> )

## Target Details

Background:	Full Gene Name: v-mos Moloney murine sarcoma viral oncogene homolog Synonyms: MGC119962,MGC119963,MSV
Gene ID:	4342
NCBI Accession:	<a href="#">NM_005372</a>

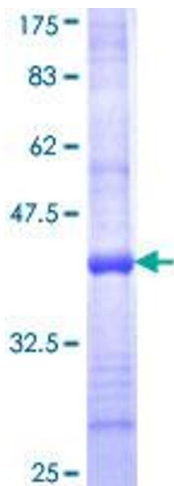
## Application Details

Application Notes:	Optimal working dilution should be determined by the investigator.
Comment:	Preparation method: in vitro, wheat germ expression system Product Quality tested by: 12.5% SDS-PAGE Stained with Coomassie Blue.
Restrictions:	For Research Use only

## Handling

Buffer:	50 mM Tris-HCl, 10 mM reduced Glutathione, pH =8.0 in the elution buffer.
Handling Advice:	Aliquot to avoid repeated freezing and thawing.
Storage:	-80 °C
Storage Comment:	Best use within three months from the date of receipt of this protein.

## Images



### SDS-PAGE

Image 1.