



[Go to Product page](#)

Datasheet for ABIN1781653

RPL10A Protein (AA 108-217) (GST tag)

1 Image

Overview

Quantity:	10 µg
Target:	RPL10A
Protein Characteristics:	AA 108-217
Origin:	Human
Source:	Wheat germ
Protein Type:	Recombinant
Purification tag / Conjugate:	This RPL10A protein is labelled with GST tag.
Application:	ELISA, Western Blotting (WB), Affinity Purification (AP), Antibody Array (AA)

Product Details

Purpose:	RPL10A (Human) Recombinant Protein (Q01)
Sequence:	DAFLASESLI KQIPRILGPG LNKAGKFPSL LTHNENMVAK VDEVKSTIKF QMKKVLCLAV AVGHVKMTDD ELVYNIHLAV NFLVSLKKN WQNVRALYIK STMGKPQRLY
Characteristics:	Human RPL10A partial ORF (NP_009035, 108 a.a. - 217 a.a.) recombinant protein with GST-tag at N-terminal.
Purification:	in vitro wheat germ expression system

Target Details

Target:	RPL10A
Alternative Name:	RPL10A (RPL10A Products)

Target Details

Background: Full Gene Name: ribosomal protein L10a
Synonyms: Csa-19,NEDD6

Gene ID: 4736

NCBI Accession: [NM_007104](#)

Application Details

Application Notes: Optimal working dilution should be determined by the investigator.

Comment: Preparation method: in vitro, wheat germ expression system
Product Quality tested by: 12.5% SDS-PAGE Stained with Coomassie Blue.

Restrictions: For Research Use only

Handling

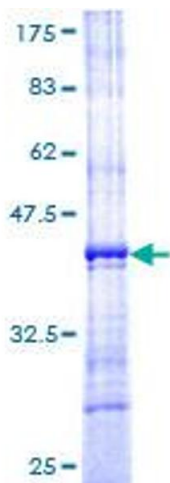
Buffer: 50 mM Tris-HCl, 10 mM reduced Glutathione, pH =8.0 in the elution buffer.

Handling Advice: Aliquot to avoid repeated freezing and thawing.

Storage: -80 °C

Storage Comment: Best use within three months from the date of receipt of this protein.

Images



SDS-PAGE

Image 1.