

Datasheet for ABIN1781669  
**NEFL Protein (AA 1-543) (GST tag)**



[Go to Product page](#)

1 Image

Overview

Quantity:	10 µg
Target:	NEFL
Protein Characteristics:	AA 1-543
Origin:	Human
Source:	Wheat germ
Protein Type:	Recombinant
Purification tag / Conjugate:	This NEFL protein is labelled with GST tag.
Application:	Western Blotting (WB), ELISA, Antibody Array (AA), Affinity Purification (AP)

Product Details

Purpose:	NEFL (Human) Recombinant Protein (P01)
Sequence:	MSSFSEYEPYY STSYKRRYVE TPRVHISSVR SGYSTARSAY SSYSAPVSSS LSVRRSYSSS SGSLMPLEN LDLSQVA AIS NDLKSIRTQE KAQLQDLNDR FASFIERVHE LEQQNKVLEA ELLVLRQKHS EPSRFRALYE QEIRDLRLAA EDATNEKQAL QGEREGLEET LRNLQARYEE EVLSREDAEG RLMEARKGAD EAALARAELE KRIDSLMDEI SFLKKVHEEE IAELQAQIQY AQISVEMDVT KPDLAALKD IRAQYEKLA AKNMQNAEEWF KSRFTVLTES AAKNTDAVRA AKDEVSESRR LLKAKTLEIE ACRGMNEALE KQLQELEDKQ NADISAMQDT INKLENELRT TKSEMARYLK EYQDLLNVKM ALDIEIAAYR KLLERGEETRL SFTSVGSITS GYSQSSQVFG RSAYGGLQTS SYLMSTRSFP SYYTSHVQEE QIEVEETIEA AKAEAAKDEP PSEGEAE EEE KDKEAE EEE AAE EEEAAKE ESEEAKE EEE GGE GEEGEET KEAE EEEK K V EGAGEEQA AK KKD
Characteristics:	Human NEFL full-length ORF ( NP_006149.2, 1 a.a. - 543 a.a.) recombinant protein with GST-tag at N-terminal.

## Product Details

---

Purification: in vitro wheat germ expression system

## Target Details

---

Target: NEFL

Alternative Name: NEFL ([NEFL Products](#))

Background: Full Gene Name: neurofilament, light polypeptide  
Synonyms: CMT1F,CMT2E,FLJ53642,NF-L,NF68,NFL

Gene ID: 4747

NCBI Accession: [NM\\_006158](#)

## Application Details

---

Application Notes: Optimal working dilution should be determined by the investigator.

Comment: Preparation method: in vitro, wheat germ expression system  
Product Quality tested by: 12.5% SDS-PAGE Stained with Coomassie Blue.

Restrictions: For Research Use only

## Handling

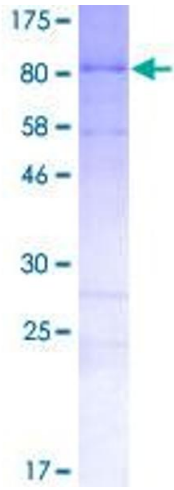
---

Buffer: 50 mM Tris-HCl, 10 mM reduced Glutathione, pH =8.0 in the elution buffer.

Handling Advice: Aliquot to avoid repeated freezing and thawing.

Storage: -80 °C

Storage Comment: Best use within three months from the date of receipt of this protein.



### SDS-PAGE

Image 1.