

Datasheet for ABIN1781811
anti-Thrombospondin 1 antibody (N-Term)

6 Images

[Go to Product page](#)

Overview

Quantity:	100 µg
Target:	Thrombospondin 1 (THBS1)
Binding Specificity:	N-Term
Reactivity:	Human, Mouse
Host:	Goat
Clonality:	Polyclonal
Conjugate:	This Thrombospondin 1 antibody is un-conjugated
Application:	Western Blotting (WB), ELISA, Immunohistochemistry (IHC), Immunofluorescence (IF), Flow Cytometry (FACS)

Product Details

Purpose:	Thrombospondin
Sequence:	NRIPESGGDN SVFD
Isotype:	IgG
Cross-Reactivity:	Cow, Human, Mouse, Rat
Purification:	Purified from goat serum by ammonium sulphate precipitation followed by antigen affinity chromatography using the immunizing peptide.
Grade:	Verified

Target Details

Target:	Thrombospondin 1 (THBS1)
Alternative Name:	THBS1 (THBS1 Products)
Background:	THBS1, thrombospondin 1, THBS, TSP, TSP1, thrombospondin-1p180
Gene ID:	7057
NCBI Accession:	NP_003237
Pathways:	Autophagy

Application Details

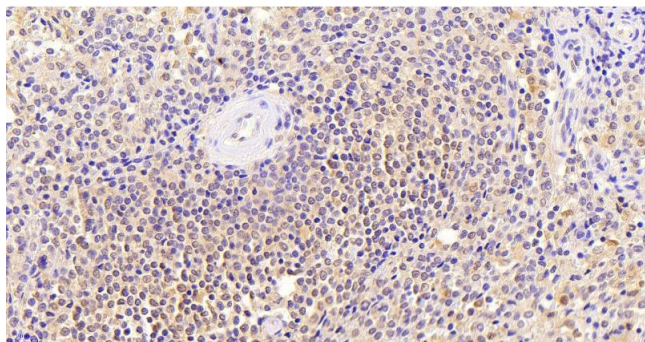
Application Notes:	<p>Immunohistochemistry: Paraffin embedded Human Spleen. Recommended concentration: 5 µg/mL.</p> <p>Western Blot: Approx 150 kDa band observed in Mouse Kidney lysates (calculated MW of 129 kDa according to NP_035710.2). Recommended concentration: 0.3-1 µg/mL. Primary incubation 1 hour at room temperature.</p> <p>Peptide ELISA: antibody detection limit dilution 1:128000.</p>
Comment:	<p>Immunofluorescence: Strong expression of the protein seen in the cytoplasm of HeLa and HepG2 cells. Recommended concentration: 10µg/ml.</p> <p>Flow Cytometry: Flow cytometric analysis of A431 cells. Recommended concentration</p>
Restrictions:	For Research Use only

Handling

Format:	Liquid
Concentration:	0.5 mg/mL
Buffer:	Supplied at 0.5 mg/mL in Tris saline, 0.02 % sodium azide, pH 7.3 with 0.5 % bovine serum albumin.
Preservative:	Sodium azide
Precaution of Use:	This product contains Sodium azide: a POISONOUS AND HAZARDOUS SUBSTANCE which should be handled by trained staff only.
Handling Advice:	Minimize freezing and thawing.
Storage:	-20 °C
Storage Comment:	Aliquot and store at -20°C, with minimal freeze/thawing. A working aliquot may be refrigerated

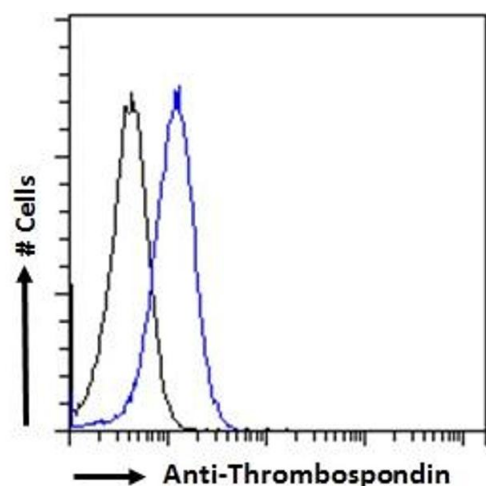
at 4°C for a few weeks and still remain viable.

Images



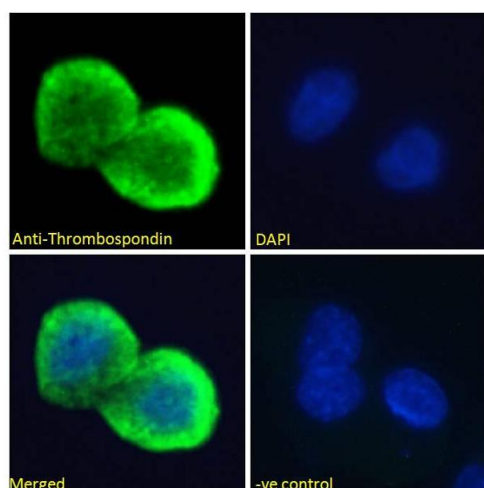
Immunohistochemistry

Image 1. ABIN1781811 (5µg/ml) staining of paraffin embedded Human Spleen. Heat induced antigen retrieval with citrate buffer pH 6, HRP-staining.



Flow Cytometry

Image 2. ABIN1781811 Flow cytometric analysis of paraformaldehyde fixed A431 cells (blue line), permeabilized with 0.5% Triton. Primary incubation 1hr (10ug/ml) followed by Alexa Fluor 488 secondary antibody (2ug/ml). IgG control: Unimmunized goat IgG (black line) fol



Immunofluorescence

Image 3. ABIN1781811 Immunofluorescence analysis of paraformaldehyde fixed HepG2 cells, permeabilized with 0.15% Triton. Primary incubation 1hr (10ug/ml) followed by Alexa Fluor 488 secondary antibody (4ug/ml), showing cytoplasmic/Plasma Membrane staining. The nuclear stain is DAPI (blue). Negative control: Unimmunized goat IgG (10ug/ml) followed by Alexa Fluor 488 secondary antibody (2ug/ml).

Please check the [product details page](#) for more images. Overall 6 images are available for ABIN1781811.