



[Go to Product page](#)

Datasheet for ABIN1781839

## anti-Contactin 1 antibody (AA 585-870)

### 3 Images

#### Overview

Quantity:	100 µg
Target:	Contactin 1 (CNTN1)
Binding Specificity:	AA 585-870
Reactivity:	Human, Rat, Mouse
Host:	Goat
Clonality:	Polyclonal
Conjugate:	This Contactin 1 antibody is un-conjugated
Application:	Western Blotting (WB), ELISA, Immunohistochemistry (IHC)

#### Product Details

Purpose:	contactin 1 (aa585-870)
Sequence:	QVTSQEYSAR LEN
Isotype:	IgG
Specificity:	This antibody is expected to recognize isoform 1 (NP_001834.2) and isoform 2 (NP_778203.1).
Cross-Reactivity:	Dog, Human, Mouse, Pig, Rat
Purification:	Purified from goat serum by ammonium sulphate precipitation followed by antigen affinity chromatography using the immunizing peptide.
Grade:	Verified

## Target Details

---

Target:	Contactin 1 (CNTN1)
Alternative Name:	CNTN1 ( <a href="#">CNTN1 Products</a> )
Background:	CNTN1, contactin 1, F3, GP135, contactin-1, glycoprotein gP135, neural cell surface protein F3
Molecular Weight:	Expected molecular weight: 150 kDa
Gene ID:	1272, 12805, 117258
NCBI Accession:	<a href="#">NP_001834</a> , <a href="#">NP_778203</a>

## Application Details

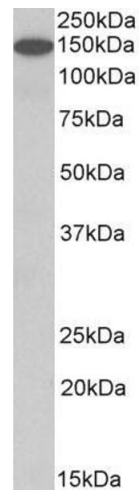
---

Application Notes:	<p>Immunohistochemistry: Paraffin embedded Human Brain (Cerebellum) and Mouse Brain (Cerebral Cortex). Recommended concentration: 5 µg/mL.</p> <p>Western Blot: Approx 140 kDa band observed in Mouse Brain, and approx 150 kDa observed in Human and Rat Brain lysates (calculated MW of 113 kDa according to according to Human, NP_001834.2, Mouse NP_031753.1 and Rat NP_476459.1). The observed molecular weight</p> <p>Peptide ELISA: antibody detection limit dilution 1:16000.</p>
Restrictions:	For Research Use only

## Handling

---

Format:	Liquid
Concentration:	0.5 mg/mL
Buffer:	Supplied at 0.5 mg/mL in Tris saline, 0.02 % sodium azide, pH 7.3 with 0.5 % bovine serum albumin.
Preservative:	Sodium azide
Precaution of Use:	This product contains Sodium azide: a POISONOUS AND HAZARDOUS SUBSTANCE which should be handled by trained staff only.
Handling Advice:	Minimize freezing and thawing.
Storage:	-20 °C
Storage Comment:	Aliquot and store at -20°C, with minimal freeze/thawing. A working aliquot may be refrigerated at 4°C for a few weeks and still remain viable.



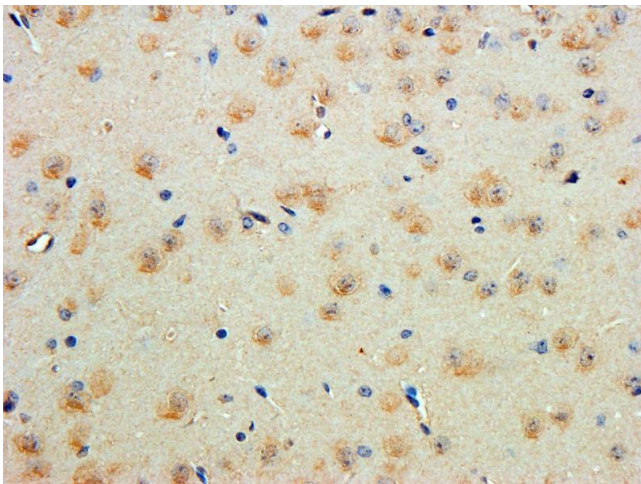
### Western Blotting

**Image 1.** ABIN1781839 (1µg/ml) staining of Human Cerebellum lysate (35µg protein in RIPA buffer). Primary incubation was 1 hour. Detected by chemiluminescence.



### Western Blotting

**Image 2.** ABIN1781839 (1µg/ml) staining of Mouse (A) and Rat (B) Brain lysate (35µg protein in RIPA buffer). Primary incubation was 1 hour. Detected by chemiluminescence.



### Immunohistochemistry

**Image 3.** ABIN1781839 (5ug/ml) staining of paraffin embedded Mouse Cerebral Cortex. Steamed antigen retrieval with citrate buffer pH 6, DAB-staining.