



[Go to Product page](#)

Datasheet for ABIN1781864
anti-CA12 antibody (AA 188-199)

2 Images

Overview

Quantity:	100 µg
Target:	CA12
Binding Specificity:	AA 188-199
Reactivity:	Human
Host:	Goat
Clonality:	Polyclonal
Conjugate:	This CA12 antibody is un-conjugated
Application:	Western Blotting (WB), ELISA, Immunohistochemistry (IHC)

Product Details

Purpose:	carbonic anhydrase XII (aa188-199)
Sequence:	SHLQHVKYKG QE
Isotype:	IgG
Specificity:	This antibody is expected to recognize all reported isoforms (NP_001209.1, NP_996808.1, NP_001280571.1).
Cross-Reactivity:	Human
Purification:	Purified from goat serum by ammonium sulphate precipitation followed by antigen affinity chromatography using the immunizing peptide.
Grade:	Verified

Target Details

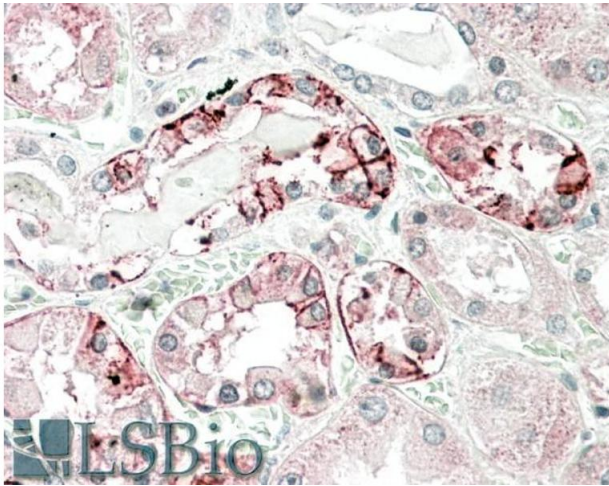
Target:	CA12
Alternative Name:	CA12 (CA12 Products)
Background:	CA12, carbonic anhydrase XII, CAXII, HsT18816, CA-XII, carbonate dehydratase XII, carbonic anhydrase 12, carbonic dehydratase, tumor antigen HOM-RCC-3.1.3
Molecular Weight:	Expected molecular weight: 45 kDa
Gene ID:	771
NCBI Accession:	NP_001209 , NP_996808 , NP_001280571

Application Details

Application Notes:	Immunohistochemistry: In paraffin embedded Human Kidney shows membranous staining in some epithelial cells of convoluted tubules. Recommended concentration, 5-10 µg/mL. Western Blot: Approx 45 kDa band observed in Human Kidney lysates (calculated MW of 39.5 kDa according to NP_001209.1). Recommended concentration: 0.3-1 µg/mL. Peptide ELISA: antibody detection limit dilution 1:128000.
Restrictions:	For Research Use only

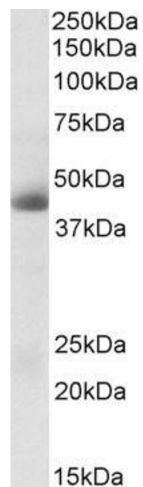
Handling

Format:	Liquid
Concentration:	0.5 mg/mL
Buffer:	Supplied at 0.5 mg/mL in Tris saline, 0.02 % sodium azide, pH 7.3 with 0.5 % bovine serum albumin.
Preservative:	Sodium azide
Precaution of Use:	This product contains Sodium azide: a POISONOUS AND HAZARDOUS SUBSTANCE which should be handled by trained staff only.
Handling Advice:	Minimize freezing and thawing.
Storage:	-20 °C
Storage Comment:	Aliquot and store at -20°C, with minimal freeze/thawing. A working aliquot may be refrigerated at 4°C for a few weeks and still remain viable.



Immunohistochemistry

Image 1. ABIN1781864 (5 μ g/ml) staining of paraffin embedded Human Kidney. Steamed antigen retrieval with citrate buffer pH 6, AP-staining.



Western Blotting

Image 2. ABIN1781864 (0.3 μ g/ml) staining of Human Kidney lysate (35 μ g protein in RIPA buffer). Primary incubation was 1 hour. Detected by chemiluminescence.