



[Go to Product page](#)

Datasheet for ABIN1781939

anti-COL4a3 antibody (AA 341-353)

1 Image

Overview

Quantity:	100 µg
Target:	COL4a3 (COL4A3)
Binding Specificity:	AA 341-353
Reactivity:	Human
Host:	Goat
Clonality:	Polyclonal
Conjugate:	This COL4a3 antibody is un-conjugated
Application:	ELISA, Immunohistochemistry (IHC)

Product Details

Purpose:	COL4A3 (aa341-353)
Sequence:	RGPT EYD TY QEK
Isotype:	IgG
Cross-Reactivity:	Cow, Dog, Human
Purification:	Purified from goat serum by ammonium sulphate precipitation followed by antigen affinity chromatography using the immunizing peptide.
Grade:	Verified

Target Details

Target:	COL4a3 (COL4A3)
---------	-----------------

Target Details

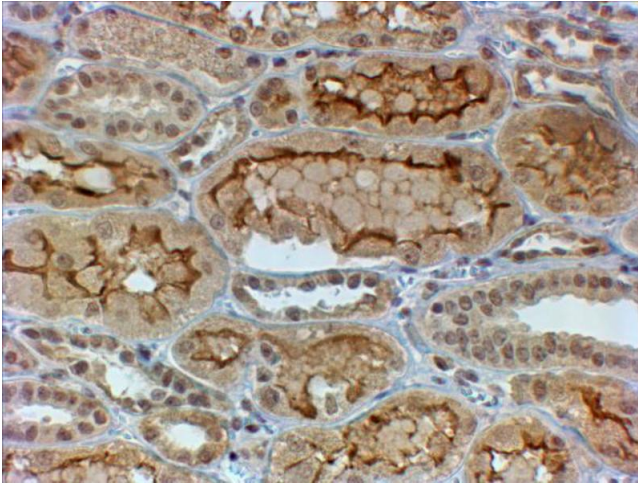
Alternative Name:	COL4A3 (COL4A3 Products)
Background:	COL4A3, collagen, type IV, alpha 3 (Goodpasture antigen), collagen IV, alpha-3 polypeptide, collagen alpha-3(IV) chain, tumstatin
Gene ID:	1285
NCBI Accession:	NP_000082
Pathways:	Sensory Perception of Sound , Positive Regulation of Endopeptidase Activity

Application Details

Application Notes:	Immunohistochemistry: In paraffin embedded Human Kidney shows staining at the luminal side of the epithelial cell membranes. Recommended concentration, 4-6 µg/mL. Peptide ELISA: antibody detection limit dilution 1:32000.
Restrictions:	For Research Use only

Handling

Format:	Liquid
Concentration:	0.5 mg/mL
Buffer:	Supplied at 0.5 mg/mL in Tris saline, 0.02 % sodium azide, pH 7.3 with 0.5 % bovine serum albumin.
Preservative:	Sodium azide
Precaution of Use:	This product contains Sodium azide: a POISONOUS AND HAZARDOUS SUBSTANCE which should be handled by trained staff only.
Handling Advice:	Minimize freezing and thawing.
Storage:	-20 °C
Storage Comment:	Aliquot and store at -20°C, with minimal freeze/thawing. A working aliquot may be refrigerated at 4°C for a few weeks and still remain viable.



Immunohistochemistry

Image 1. ABIN1781939 (4 μ g/ml) staining of paraffin embedded Human Kidney. Steamed antigen retrieval with citrate buffer pH 6, HRP-staining.