

Datasheet for ABIN1781957  
**anti-CUTA antibody (C-Term)**

## 2 Images

[Go to Product page](#)

## Overview

Quantity:	100 µg
Target:	CUTA
Binding Specificity:	C-Term
Reactivity:	Human
Host:	Goat
Clonality:	Polyclonal
Conjugate:	This CUTA antibody is un-conjugated
Application:	ELISA, Western Blotting (WB), Immunohistochemistry (IHC)

## Product Details

Purpose:	CutA protein
Sequence:	QVTESVSDSI T
Isotype:	IgG
Specificity:	This antibody is expected to recognize all reported isoforms (NP_001014433.1, NP_057005.1, NP_001014840.1). Reported variants represent identical protein: NP_001014837.1, NP_001014838.1, NP_057005.1.
Cross-Reactivity:	Human
Purification:	Purified from goat serum by ammonium sulphate precipitation followed by antigen affinity chromatography using the immunizing peptide.
Grade:	Verified

## Target Details

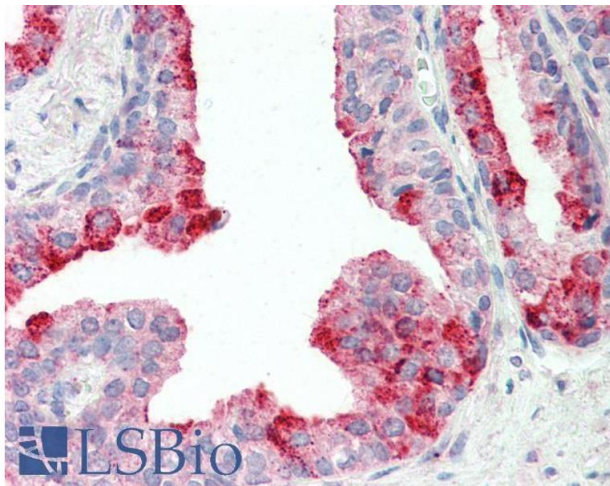
Target:	CUTA
Alternative Name:	CUTA ( <a href="#">CUTA Products</a> )
Background:	CUTA, cutA divalent cation tolerance homolog (E. coli), ACHAP, C6orf82, acetylcholinesterase-associated protein, brain acetylcholinesterase putative membrane anchor, divalent cation tolerant protein CUTA, protein CutA
Molecular Weight:	Expected molecular weight: 16 kDa
Gene ID:	51596
NCBI Accession:	<a href="#">NP_001014433</a> , <a href="#">NP_057005</a> , <a href="#">NP_001014840</a>

## Application Details

Application Notes:	Immunohistochemistry: Paraffin embedded Human Prostate. Recommended concentration: 5 µg/mL. Western Blot: Approx 16 kDa band observed in lysates of cell line Kelly (calculated MW of 16.8 kDa according to NP_057005.1). Recommended concentration: 1-3 µg/mL. Primary incubation was 1 hour. Peptide ELISA: antibody detection limit dilution 1:64000.
Restrictions:	For Research Use only

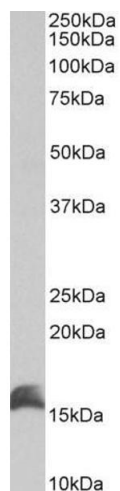
## Handling

Format:	Liquid
Concentration:	0.5 mg/mL
Buffer:	Supplied at 0.5 mg/mL in Tris saline, 0.02 % sodium azide, pH 7.3 with 0.5 % bovine serum albumin.
Preservative:	Sodium azide
Precaution of Use:	This product contains Sodium azide: a POISONOUS AND HAZARDOUS SUBSTANCE which should be handled by trained staff only.
Handling Advice:	Minimize freezing and thawing.
Storage:	-20 °C
Storage Comment:	Aliquot and store at -20°C, with minimal freeze/thawing. A working aliquot may be refrigerated at 4°C for a few weeks and still remain viable.



#### Immunohistochemistry

**Image 1.** ABIN1781957 (5µg/ml) staining of paraffin embedded Human Prostate. Steamed antigen retrieval with citrate buffer pH 6, AP-staining.



#### Western Blotting

**Image 2.** ABIN1781957 (1µg/ml) staining of Kelly lysate (35µg protein in RIPA buffer). Detected by chemiluminescence.