

Datasheet for ABIN1781962
anti-ADAM19 antibody (Internal Region)[Go to Product page](#)

2 Images

Overview

Quantity:	100 µg
Target:	ADAM19 (Adam19)
Binding Specificity:	Internal Region
Reactivity:	Human
Host:	Goat
Clonality:	Polyclonal
Conjugate:	This ADAM19 antibody is un-conjugated
Application:	Western Blotting (WB), ELISA, Immunohistochemistry (IHC)

Product Details

Purpose:	ADAM19
Sequence:	KIQCQSSEAR PLESN
Isotype:	IgG
Cross-Reactivity:	Cow, Dog, Human, Pig
Purification:	Purified from goat serum by ammonium sulphate precipitation followed by antigen affinity chromatography using the immunizing peptide.
Grade:	Verified

Target Details

Target:	ADAM19 (Adam19)
---------	-----------------

Target Details

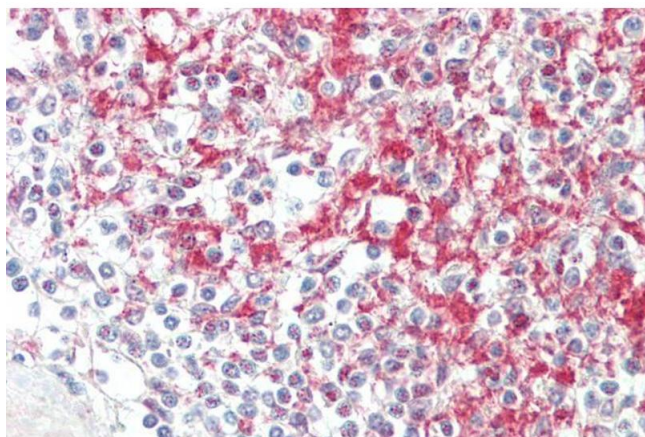
Alternative Name:	ADAM19 (Adam19 Products)
Background:	ADAM19, ADAM metallopeptidase domain 19, MADDAM, MLTNB, ADAM 19, a disintegrin and metalloproteinase domain 19 (meltrin beta), disintegrin and metalloproteinase domain-containing protein 19, meltrin beta, meltrin-beta, metalloprotease and disintegrin dend
Molecular Weight:	Expected molecular weight: 125 kDa
Gene ID:	8728
NCBI Accession:	NP_150377

Application Details

Application Notes:	Immunohistochemistry: Paraffin embedded Human Spleen. Recommended concentration: 5 µg/mL. Western Blot: Approx 125 kDa band observed in Human Spleen lysates (calculated MW of 101 kDa according to NP_150377.1). The observed molecular weight corresponds to the glycosylated form. Recommended concentration: 0.1-0.3 µg/mL. Peptide ELISA: antibody detection limit dilution 1:128000.
Restrictions:	For Research Use only

Handling

Format:	Liquid
Concentration:	0.5 mg/mL
Buffer:	Supplied at 0.5 mg/mL in Tris saline, 0.02 % sodium azide, pH 7.3 with 0.5 % bovine serum albumin.
Preservative:	Sodium azide
Precaution of Use:	This product contains Sodium azide: a POISONOUS AND HAZARDOUS SUBSTANCE which should be handled by trained staff only.
Handling Advice:	Minimize freezing and thawing.
Storage:	-20 °C
Storage Comment:	Aliquot and store at -20°C, with minimal freeze/thawing. A working aliquot may be refrigerated at 4°C for a few weeks and still remain viable.



Immunohistochemistry

Image 1. ABIN1781962 (5µg/ml) staining of paraffin embedded Human Spleen. Steamed antigen retrieval with citrate buffer pH 6, AP-staining.



Western Blotting

Image 2. ABIN1781962 (0.1µg/ml) staining of Spleen lysate (35µg protein in RIPA buffer). Primary incubation was 1 hour. Detected by chemiluminescence.