



[Go to Product page](#)

Datasheet for ABIN1781970  
**anti-Syndecan 1 antibody (Internal Region)**

1 Image

Overview

Quantity:	100 µg
Target:	Syndecan 1 (SDC1)
Binding Specificity:	Internal Region
Reactivity:	Human
Host:	Goat
Clonality:	Polyclonal
Conjugate:	This Syndecan 1 antibody is un-conjugated
Application:	ELISA

Product Details

Purpose:	syndecan 1 / CD138
Sequence:	REQEATPRPR ETTQ
Isotype:	IgG
Specificity:	Reported variants represent identical protein: NP_001006947.1, NP_002988.3.
Cross-Reactivity:	Human
Purification:	Purified from goat serum by ammonium sulphate precipitation followed by antigen affinity chromatography using the immunizing peptide.
Grade:	Recent

## Target Details

---

Target:	Syndecan 1 (SDC1)
Alternative Name:	SDC1 ( <a href="#">SDC1 Products</a> )
Background:	SDC1, syndecan 1, CD138, SDC, SYND1, syndecan, CD138 antigen, heparan sulfate proteoglycan fibroblast growth factor receptor, syndecan proteoglycan 1, syndecan-1
Molecular Weight:	Expected molecular weight: 37 kDa
Gene ID:	6382
NCBI Accession:	<a href="#">NP_002988</a>
Pathways:	<a href="#">Glycosaminoglycan Metabolic Process</a> , <a href="#">Regulation of Muscle Cell Differentiation</a> , <a href="#">Skeletal Muscle Fiber Development</a> , <a href="#">Lipid Metabolism</a>

## Application Details

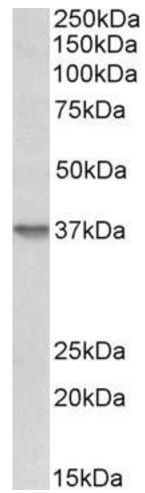
---

Application Notes:	Western Blot: Approx 37 kDa band observed in preliminary testing of HepG2 cell lysate after 1 µg/mL of antibody staining (calculated MW of 32.5 kDa according to NP_002988.3). Primary incubation 1 hour at room temperature. Peptide ELISA: antibody detection limit dilution 1:2000.
Restrictions:	For Research Use only

## Handling

---

Format:	Liquid
Concentration:	0.5 mg/mL
Buffer:	Supplied at 0.5 mg/mL in Tris saline, 0.02 % sodium azide, pH 7.3 with 0.5 % bovine serum albumin.
Preservative:	Sodium azide
Precaution of Use:	This product contains Sodium azide: a POISONOUS AND HAZARDOUS SUBSTANCE which should be handled by trained staff only.
Handling Advice:	Minimize freezing and thawing.
Storage:	-20 °C
Storage Comment:	Aliquot and store at -20°C, with minimal freeze/thawing. A working aliquot may be refrigerated at 4°C for a few weeks and still remain viable.



### Western Blotting

**Image 1.** ABIN1781970 (1 $\mu$ g/ml) staining of HepG2 lysate (35 $\mu$ g protein in RIPA buffer). Primary incubation was 1 hour. Detected by chemiluminescence.