

Datasheet for ABIN1781980
anti-C9 antibody (AA 205-216)[Go to Product page](#)

1 Image

Overview

Quantity:	100 µg
Target:	C9
Binding Specificity:	AA 205-216
Reactivity:	Human
Host:	Goat
Clonality:	Polyclonal
Conjugate:	This C9 antibody is un-conjugated
Application:	Western Blotting (WB), ELISA

Product Details

Purpose:	C9 (aa205-216)
Sequence:	ETKGEKNFRT EH
Isotype:	IgG
Predicted Reactivity:	Human
Purification:	Purified from goat serum by ammonium sulphate precipitation followed by antigen affinity chromatography using the immunizing peptide.
Grade:	Verified

Target Details

Target:	C9
---------	----

Target Details

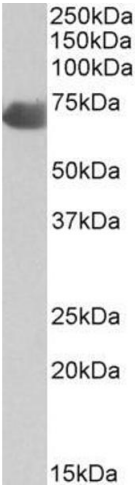
Alternative Name:	Complement Component C9 (C9 Products)
Background:	C9, complement component 9, complement component C9
Molecular Weight:	Expected molecular weight: 70 kDa
Gene ID:	735
NCBI Accession:	NP_001728
Pathways:	Complement System

Application Details

Application Notes:	DS WB Results: Approx 70 kDa band observed in Human Placenta, Kidney and Liver lysates (calculated MW of 63.2 kDa according to NP_001728.1). The observed molecular weight corresponds to the glycosylated form. Recommended concentration: 1-3 µg/mL. Peptide ELISA: antibody detection limit dilution 1:4000.
Restrictions:	For Research Use only

Handling

Format:	Liquid
Concentration:	0.5 mg/mL
Buffer:	Supplied at 0.5 mg/mL in Tris saline, 0.02 % sodium azide, pH 7.3 with 0.5 % bovine serum albumin.
Preservative:	Sodium azide
Precaution of Use:	This product contains Sodium azide: a POISONOUS AND HAZARDOUS SUBSTANCE which should be handled by trained staff only.
Handling Advice:	Minimize freezing and thawing.
Storage:	-20 °C
Storage Comment:	Aliquot and store at -20°C, with minimal freeze/thawing. A working aliquot may be refrigerated at 4°C for a few weeks and still remain viable.



Western Blotting

Image 1. ABIN1781980 (2µg/ml) staining of Human Placenta lysate (35µg protein in RIPA buffer). Primary incubation was 1 hour. Detected by chemiluminescence.