

Datasheet for ABIN1782132
anti-GOT2 antibody (Internal Region)

2 Images

[Go to Product page](#)

Overview

Quantity:	100 µg
Target:	GOT2
Binding Specificity:	Internal Region
Reactivity:	Human, Mouse
Host:	Goat
Clonality:	Polyclonal
Conjugate:	This GOT2 antibody is un-conjugated
Application:	Western Blotting (WB), ELISA

Product Details

Purpose:	GOT2
Sequence:	QGYRYYDPKT CGFD
Isotype:	IgG
Cross-Reactivity:	Cow, Dog, Human, Mouse, Pig, Rat
Purification:	Purified from goat serum by ammonium sulphate precipitation followed by antigen affinity chromatography using the immunizing peptide.
Grade:	Verified

Target Details

Target:	GOT2
---------	------

Target Details

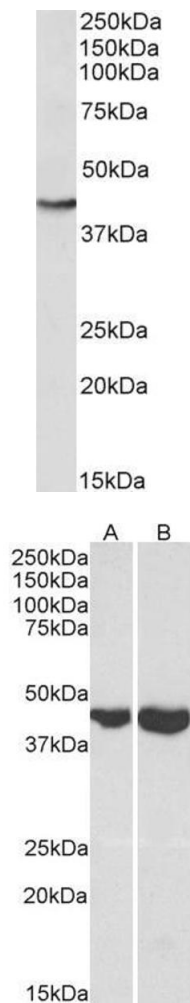
Alternative Name:	GOT2 (GOT2 Products)
Background:	GOT2, glutamic-oxaloacetic transaminase 2, mitochondrial aspartate aminotransferase 2 , FLJ40994, aspartate aminotransferase 2
Molecular Weight:	Expected molecular weight 45 kDa
Gene ID:	2806
NCBI Accession:	NP_002071
Pathways:	Monocarboxylic Acid Catabolic Process

Application Details

Application Notes:	Western Blot: Approx 45 kDa band observed in lysates of cell line HepG2, and of Mouse Brain and Heart (calculated MW of 47.5 kDa according to human NP_002071.2 and 47.4 kDa accordnig to mouse NP_034455.1). Recommended concentration: 0.3-1 µg/mL. Peptide ELISA: antibody detection limit dilution 1:8000.
Restrictions:	For Research Use only

Handling

Format:	Liquid
Concentration:	0.5 mg/mL
Buffer:	Supplied at 0.5 mg/mL in Tris saline, 0.02 % sodium azide, pH 7.3 with 0.5 % bovine serum albumin.
Preservative:	Sodium azide
Precaution of Use:	This product contains Sodium azide: a POISONOUS AND HAZARDOUS SUBSTANCE which should be handled by trained staff only.
Handling Advice:	Minimize freezing and thawing.
Storage:	-20 °C
Storage Comment:	Aliquot and store at -20°C, with minimal freeze/thawing. A working aliquot may be refrigerated at 4°C for a few weeks and still remain viable.



Western Blotting

Image 1. ABIN1782132 (0.3µg/ml) staining of HepG2 lysate (35µg protein in RIPA buffer). Primary incubation was 1 hour. Detected by chemiluminescence.

Western Blotting

Image 2. ABIN1782132 (0.1µg/ml) staining of Mouse Brain (A) and Heart (B) lysates (35µg protein in RIPA buffer). Primary incubation was 1 hour. Detected by chemiluminescence.