



[Go to Product page](#)

Datasheet for ABIN1782134

P2RY11 Protein (AA 1-371) (GST tag)

1 Image

Overview

Quantity:	10 µg
Target:	P2RY11
Protein Characteristics:	AA 1-371
Origin:	Human
Source:	Wheat germ
Protein Type:	Recombinant
Purification tag / Conjugate:	This P2RY11 protein is labelled with GST tag.
Application:	ELISA, Western Blotting (WB), Antibody Array (AA), Affinity Purification (AP)

Product Details

Purpose:	P2RY11 (Human) Recombinant Protein (P01)
Sequence:	MDRGAKSCPA NFLAAADDKL SGFQGDFLWP ILVVEFLVAV ASNGLALYRF SIRKQRPWHP AVVFSVQLAV SDLLCAL TLP PLAAYLYPPK HWRYGEAACR LERFLFTCNL LGSVIFITCI SLNRYLGIVH PFFARSHLRP KHAWAVSAAG WVLAALLAMP TLSFSHLKRQ QGAGNCSVA RPEACIKCLG TADHGLAAYR AYSLVLAGLG CGLPLLL TLA AYGALGRAVL RSPGMTVAEK LRVAALVAG VALYASSYVP YHIMRVLNVD ARRRWSTRCP SFADIAQATA ALELGPYVGY QVMRGLMPLA FCVHPLLYMA AVPSLGCCCR HCPGYRDSWN PEDAKSTGQA LPLNATAAPK PSEPQSRELS Q
Characteristics:	Human P2RY11 full-length ORF (NP_002557, 1 a.a. - 371 a.a.) recombinant protein with GST-tag at N-terminal.
Purification:	in vitro wheat germ expression system

Target Details

Target:	P2RY11
Alternative Name:	P2RY11 (P2RY11 Products)
Background:	Full Gene Name: purinergic receptor P2Y, G-protein coupled, 11 Synonyms: P2Y11
Gene ID:	5032
NCBI Accession:	NM_002566
Pathways:	cAMP Metabolic Process

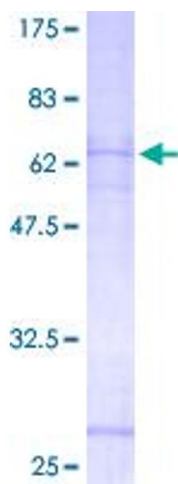
Application Details

Application Notes:	Optimal working dilution should be determined by the investigator.
Comment:	Preparation method: in vitro, wheat germ expression system Product Quality tested by: 12.5% SDS-PAGE Stained with Coomassie Blue.
Restrictions:	For Research Use only

Handling

Buffer:	50 mM Tris-HCl, 10 mM reduced Glutathione, pH =8.0 in the elution buffer.
Handling Advice:	Aliquot to avoid repeated freezing and thawing.
Storage:	-80 °C
Storage Comment:	Best use within three months from the date of receipt of this protein.

Images



SDS-PAGE

Image 1.