

Datasheet for ABIN1782159

**anti-ATP5A1 antibody (Internal Region)****2** Images[Go to Product page](#)

## Overview

Quantity:	100 µg
Target:	ATP5A1
Binding Specificity:	Internal Region
Reactivity:	Human, Mouse, Rat, Pig
Host:	Goat
Clonality:	Polyclonal
Conjugate:	This ATP5A1 antibody is un-conjugated
Application:	Western Blotting (WB), ELISA

## Product Details

Purpose:	ATP5A1
Sequence:	RVHGLRNVQA EE
Isotype:	IgG
Specificity:	This antibody is expected to recognize all reported isoforms (NP_004037.1, NP_001244263.1, NP_001001935.1). Reported variants represent identical protein: NP_001244264.1, NP_001001935.1. Reported variants represent identical protein: NP_004037.1, NP_00100
Cross-Reactivity:	Cow, Dog, Human, Mouse, Pig, Rat
Purification:	Purified from goat serum by ammonium sulphate precipitation followed by antigen affinity chromatography using the immunizing peptide.
Grade:	Verified

## Target Details

Target:	ATP5A1
Alternative Name:	ATP5A1 ( <a href="#">ATP5A1 Products</a> )
Background:	ATP5A1, ATP synthase, H <sup>+</sup> transporting, mitochondrial F1 complex, alpha subunit 1, cardiac muscle, ATP5A, ATP5AL2, ATPM, MOM2, OMR, ORM, hATP1, ATP synthase alpha chain, mitochondrial, ATP synthase subunit alpha, mitochondrial, ATP synthase, H <sup>+</sup> transportin
Molecular Weight:	Expected molecular weight 52 kDa
Gene ID:	498, 11946, 65262
NCBI Accession:	<a href="#">NP_004037</a> , <a href="#">NP_001244263</a> , <a href="#">NP_001001935</a>
Pathways:	<a href="#">Proton Transport</a> , <a href="#">Ribonucleoside Biosynthetic Process</a>

## Application Details

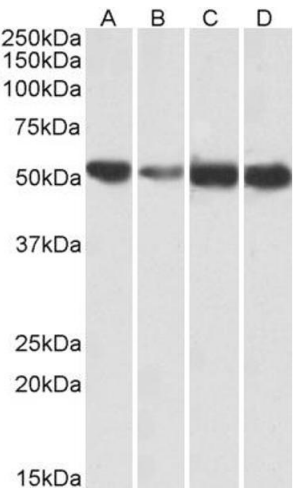
Application Notes:	Western Blot: Approx 55 kDa band observed in Human, Mouse, Rat and Pig Heart lysates (calculated MW of 54.5 kDa according to NP_001001935.1). Recommended concentration: 0.01-0.03 µg/mL. Peptide ELISA: antibody detection limit dilution 1:128000.
Comment:	<b>Additional validation:</b> This antibody has been successfully used in the following paper: Sikorski et al. (2018) PMID: 30377371.
Restrictions:	For Research Use only

## Handling

Format:	Liquid
Concentration:	0.5 mg/mL
Buffer:	Supplied at 0.5 mg/mL in Tris saline, 0.02 % sodium azide, pH 7.3 with 0.5 % bovine serum albumin.
Preservative:	Sodium azide
Precaution of Use:	This product contains Sodium azide: a POISONOUS AND HAZARDOUS SUBSTANCE which should be handled by trained staff only.
Handling Advice:	Minimize freezing and thawing.
Storage:	-20 °C
Storage Comment:	Aliquot and store at -20°C, with minimal freeze/thawing. A working aliquot may be refrigerated

at 4°C for a few weeks and still remain viable.

Images



Western Blotting

**Image 1.** ABIN1782159 (0.01µg/ml) staining of Human (A), fetal Mouse (B), adult Mouse (C) and adult Rat (D) Heart lysates (35µg protein in RIPA buffer). Primary incubation was 1 hour. Detected by chemiluminescence.



Western Blotting

**Image 2.** ABIN1782159 (0.01µg/ml) staining of Pig Heart lysates (35µg protein in RIPA buffer). Primary incubation was 1 hour. Detected by chemiluminescence.