

Datasheet for ABIN1782167  
**anti-LDHB antibody (AA 15-25)**[Go to Product page](#)

## 1 Image

## Overview

Quantity:	100 µg
Target:	LDHB
Binding Specificity:	AA 15-25
Reactivity:	Human
Host:	Goat
Clonality:	Polyclonal
Conjugate:	This LDHB antibody is un-conjugated
Application:	Western Blotting (WB), Immunohistochemistry (IHC), ELISA

## Product Details

Purpose:	LDHB (aa15-25)
Sequence:	EEATVPNNKI T
Isotype:	IgG
Specificity:	Reported variants represent identical protein: NP_002291.1, NP_001167568.1.
Cross-Reactivity:	Human
Purification:	Purified from goat serum by ammonium sulphate precipitation followed by antigen affinity chromatography using the immunizing peptide.
Grade:	Verified

## Target Details

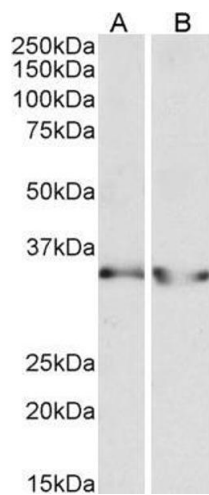
Target:	LDHB
Alternative Name:	LDHB ( <a href="#">LDHB Products</a> )
Background:	LDHB, lactate dehydrogenase B, LDH-B, LDH-H, LDHBD, TRG-5, L-lactate dehydrogenase B chain, LDH heart subunit, lactate dehydrogenase H chain, renal carcinoma antigen NY-REN-46
Molecular Weight:	Expected molecular weight 35 kDa
Gene ID:	3945
NCBI Accession:	<a href="#">NP_002291</a>
Pathways:	<a href="#">Warburg Effect</a>

## Application Details

Application Notes:	Immunohistochemistry: Paraffin embedded Human Kidney. Recommended concentration: 5 µg/mL.  Western Blot: Approx 35 kDa band observed in Human Heart and Kidney lysates (calculated MW of 36.6 kDa according to NP_002291.1). Recommended concentration: 0.3-1 µg/mL.  Peptide ELISA: antibody detection limit dilution 1:4000.
Restrictions:	For Research Use only

## Handling

Format:	Liquid
Concentration:	0.5 mg/mL
Buffer:	Supplied at 0.5 mg/mL in Tris saline, 0.02 % sodium azide, pH 7.3 with 0.5 % bovine serum albumin.
Preservative:	Sodium azide
Precaution of Use:	This product contains Sodium azide: a POISONOUS AND HAZARDOUS SUBSTANCE which should be handled by trained staff only.
Handling Advice:	Minimize freezing and thawing.
Storage:	-20 °C
Storage Comment:	Aliquot and store at -20°C, with minimal freeze/thawing. A working aliquot may be refrigerated at 4°C for a few weeks and still remain viable.



Western Blotting

**Image 1.** ABIN1782167 (0.3µg/ml) staining of Human Heart (A) and Human Kidney (B) lysates (35µg protein in RIPA buffer). Primary incubation was 1 hour. Detected by chemiluminescence.