

Datasheet for ABIN1782172
anti-SERPINB1 antibody (AA 130-143)[Go to Product page](#)

1 Image

Overview

Quantity:	100 µg
Target:	SERPINB1
Binding Specificity:	AA 130-143
Reactivity:	Human
Host:	Goat
Clonality:	Polyclonal
Conjugate:	This SERPINB1 antibody is un-conjugated
Application:	Western Blotting (WB), ELISA, Immunohistochemistry (IHC)

Product Details

Purpose:	SERPINB1 (aa130-143)
Sequence:	KTINQWVKGQ TEGK
Isotype:	IgG
Cross-Reactivity:	Human
Purification:	Purified from goat serum by ammonium sulphate precipitation followed by antigen affinity chromatography using the immunizing peptide.
Grade:	Verified

Target Details

Target:	SERPINB1
---------	----------

Target Details

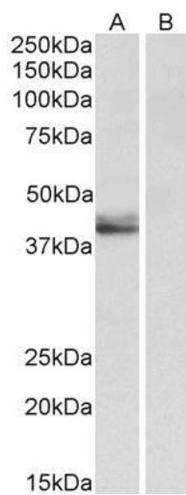
Alternative Name:	SERPINB1 (SERPINB1 Products)
Background:	SERPINB1, serpin peptidase inhibitor, clade B (ovalbumin), member 1, EI, ELANH2, LEI, M/NEI, MNEI, PI-2, PI2, leukocyte elastase inhibitor, peptidase inhibitor 2, protease inhibitor 2 (anti-elastase), monocyte/neutrophil derived, serine (or cysteine) prot
Molecular Weight:	Expected molecular weight 42-45 kDa
Gene ID:	1992
NCBI Accession:	NP_109591

Application Details

Application Notes:	Immunohistochemistry: Paraffin embedded Human Spleen (neutrophils). Recommended concentration: 5 µg/mL. Western Blot: Approx 42-45 kDa bands observed in Human Placenta lysates (calculated MW of 42.7 kDa according to NP_109591.1). The fainter 45 kDa band likely represents the acetylated form. Both bands are blocked by the immunizing peptide. Recommended concen Peptide ELISA: antibody detection limit dilution 1:64000.
Restrictions:	For Research Use only

Handling

Format:	Liquid
Concentration:	0.5 mg/mL
Buffer:	Supplied at 0.5 mg/mL in Tris saline, 0.02 % sodium azide, pH 7.3 with 0.5 % bovine serum albumin.
Preservative:	Sodium azide
Precaution of Use:	This product contains Sodium azide: a POISONOUS AND HAZARDOUS SUBSTANCE which should be handled by trained staff only.
Handling Advice:	Minimize freezing and thawing.
Storage:	-20 °C
Storage Comment:	Aliquot and store at -20°C, with minimal freeze/thawing. A working aliquot may be refrigerated at 4°C for a few weeks and still remain viable.



Western Blotting

Image 1. ABIN1782172 (0.5µg/ml) staining of Human Placenta lysate (35µg protein in RIPA buffer) with (B) and without (A) blocking with the immunizing peptide. Primary incubation was 1 hour. Detected by chemiluminescence.