

Datasheet for ABIN1782175  
**anti-BLVRB antibody (C-Term)**[Go to Product page](#)

## 1 Image

## Overview

Quantity:	100 µg
Target:	BLVRB
Binding Specificity:	C-Term
Reactivity:	Human
Host:	Goat
Clonality:	Polyclonal
Conjugate:	This BLVRB antibody is un-conjugated
Application:	Western Blotting (WB), ELISA

## Product Details

Purpose:	BLVRB
Sequence:	TTDEYDGHST YP
Isotype:	IgG
Cross-Reactivity:	Human
Purification:	Purified from goat serum by ammonium sulphate precipitation followed by antigen affinity chromatography using the immunizing peptide.
Grade:	Verified

## Target Details

Target:	BLVRB
---------	-------

## Target Details

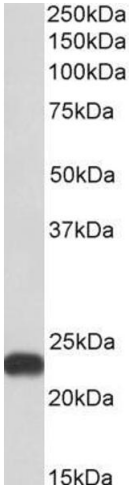
Alternative Name:	BLVRB ( <a href="#">BLVRB Products</a> )
Background:	BLVRB, biliverdin reductase B (flavin reductase (NADPH)), BVRB, FLR, SDR43U1, BVR-B, FR, GHBP, NADPH-dependent diaphorase, NADPH-flavin reductase, biliverdin-IX beta-reductase, flavin reductase (NADPH), green heme-binding protein, short chain dehydrogenas
Molecular Weight:	Expected molecular weight 23 kDa
Gene ID:	645
NCBI Accession:	<a href="#">NP_000704</a>

## Application Details

Application Notes:	Western Blot: Approx 23 kDa band observed in Human Liver lysates (calculated MW of 22.1 kDa according to NP_000704.1). Recommended concentration: 0.3-1 µg/mL. Peptide ELISA: antibody detection limit dilution 1:128000.
Restrictions:	For Research Use only

## Handling

Format:	Liquid
Concentration:	0.5 mg/mL
Buffer:	Supplied at 0.5 mg/mL in Tris saline, 0.02 % sodium azide, pH 7.3 with 0.5 % bovine serum albumin.
Preservative:	Sodium azide
Precaution of Use:	This product contains Sodium azide: a POISONOUS AND HAZARDOUS SUBSTANCE which should be handled by trained staff only.
Handling Advice:	Minimize freezing and thawing.
Storage:	-20 °C
Storage Comment:	Aliquot and store at -20°C, with minimal freeze/thawing. A working aliquot may be refrigerated at 4°C for a few weeks and still remain viable.



Western Blotting

**Image 1.** ABIN1782175 (0.3µg/ml) staining of Human Liver lysate (35µg protein in RIPA buffer). Primary incubation was 1 hour. Detected by chemiluminescence.